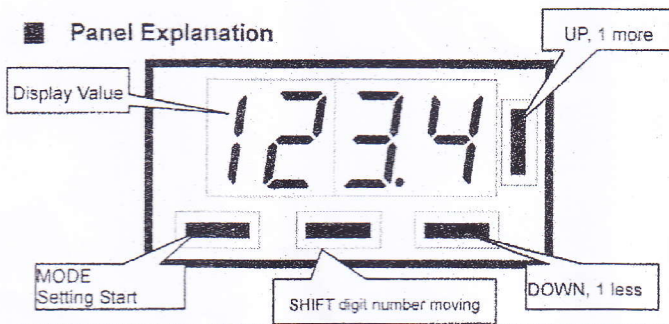


CONCH RS-x-xM Manual

Panel Explanation



Function

1. Microprocess Tachometer/Line Speed Meter
2. Can be setup the input sampling time, RPM/Line speed model and the position of decimal point etc.
3. 0.36" Height LED

Standard Specification

Power Supply	Multi-kinds of DC power supply input (isolated type)
Power Consumption	0.5W MAX.
Display Range	0~9999
Input	NPN / PNP input signal
Ambient Temperature	-10 to 55°C with no icing
Store Temperature	-25 to 65°C with no icing
Relative Humidity	35% to 85% RH

Type Explanation

RS-N-1M

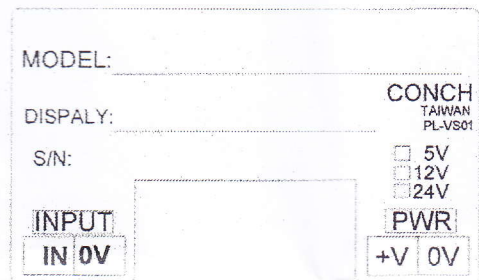
1:5V,2:12V,3:24V power supply
N:NPN input, P:PNP

Parameter setup explanation

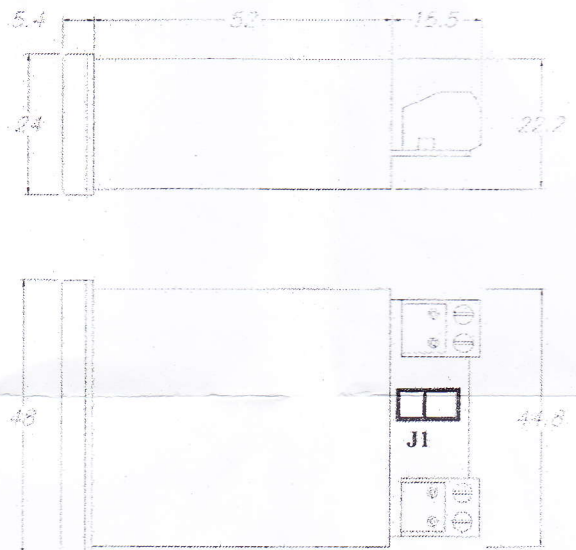
Hold "mode" key around 0.5 second to enter the parameter setting mode

SPT	Sampling time(SPT): if the setting value is going high, the display will become more stable, but the response will going slower. Press SHIFT key to start setting, the range: 0.1~9.9 sec.
SCL	Scaling Setting(SCL): setting input signal scaling, RPM = Frequency x 60 / SCL, press SHIFT key to start the setting. Range:0.1~999.9
Pnt	Decimal Point (Pnt): setup the position of decimal point of current value, press SHIFT key to start the setting, then press it again to change the setting
mode	Measuring Mode(MODE): setup RPM or LINE SPEED mode. Press SHIFT key to start the setting and press UP/DOWN key to change it. rPn =RPM Line =LINE SPEED
dim	Dimension Setup (DIM): setup the dimension of ROLLER. It is necessary at the LINE SPEED MODE and the range is :1~9999mm Line Speed(M/min) = Signal Frequency x 60 x (Pi) x dimension

Terminal Connection



Dimension



Input Frequency Limit

J1 short-circuits is low frequency around 100Hz, open-circuits is around 1K Hz