

TCS Installation Manual

1. Summary

This document describes how to install TCS (Integrated Communications Program)..

2. System requirements

	Windows 7
	Windows 8
	Windows 8.1
	Windows 10
Architecture	x86
	x64
HW	Minimum Pentium 1GHz
	Minimum RAM 512MB
	HDD - x86: Minimum 1GB - x64: Minimum 2GB

3. Preparing for Installation

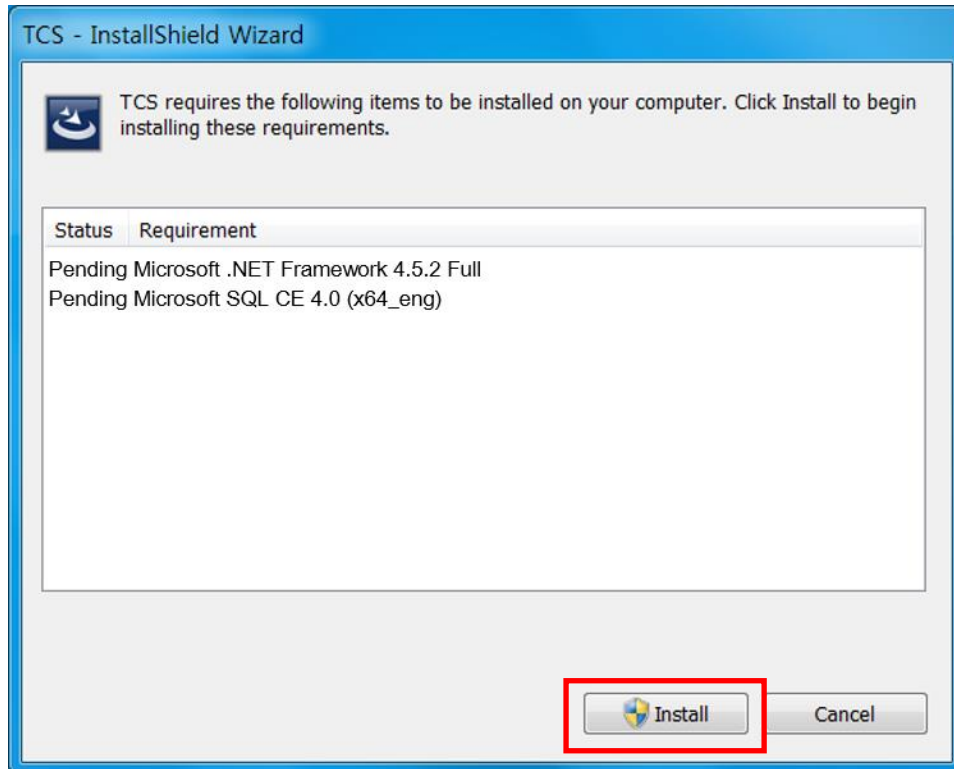
According to the PC environment, please download the program to install through the website below.

	Website	x86	x64
Korean	kor.hynux.com	TCS-x.x.x.x_(x86).exe	TCS-x.x.x.x_(x64).exe
English	eng.hynux.com		
Chinese (Simplified)	chn.hynux.com		
Chinese (Traditional)	chn.hynux.com		
Indonesian	www.hynux.com		
Vietnamese	www.hynux.com		
Spanish	www.hynux.com		
Japanese	www.hynux.com		

4. Installation

Please click on the downloaded exe file. This TCS program must have Microsoft SQL CE 4.0 and Microsoft .NET Framework 4.5.2 or higher version installed..

※ If it is already installed on the PC, it may be different from the figure below

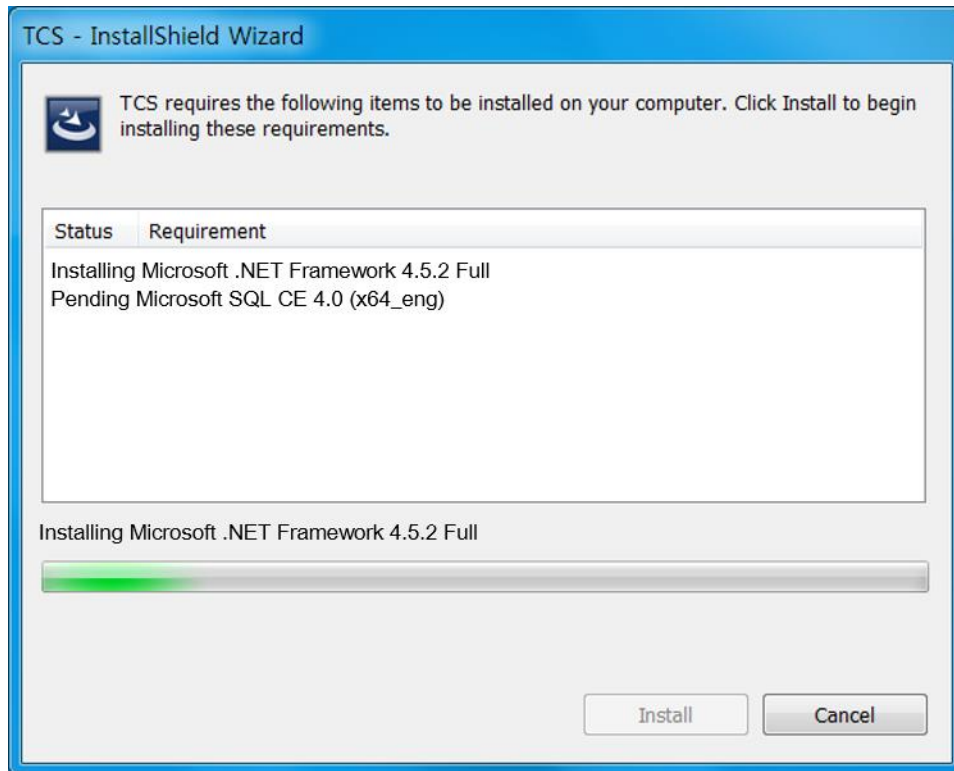


① Please click install.

4.1 Microsoft .NET Framework 4.5.2

It is Microsoft's comprehensive and consistent programming model for creating programs..

※ It does not appear if PC already installed

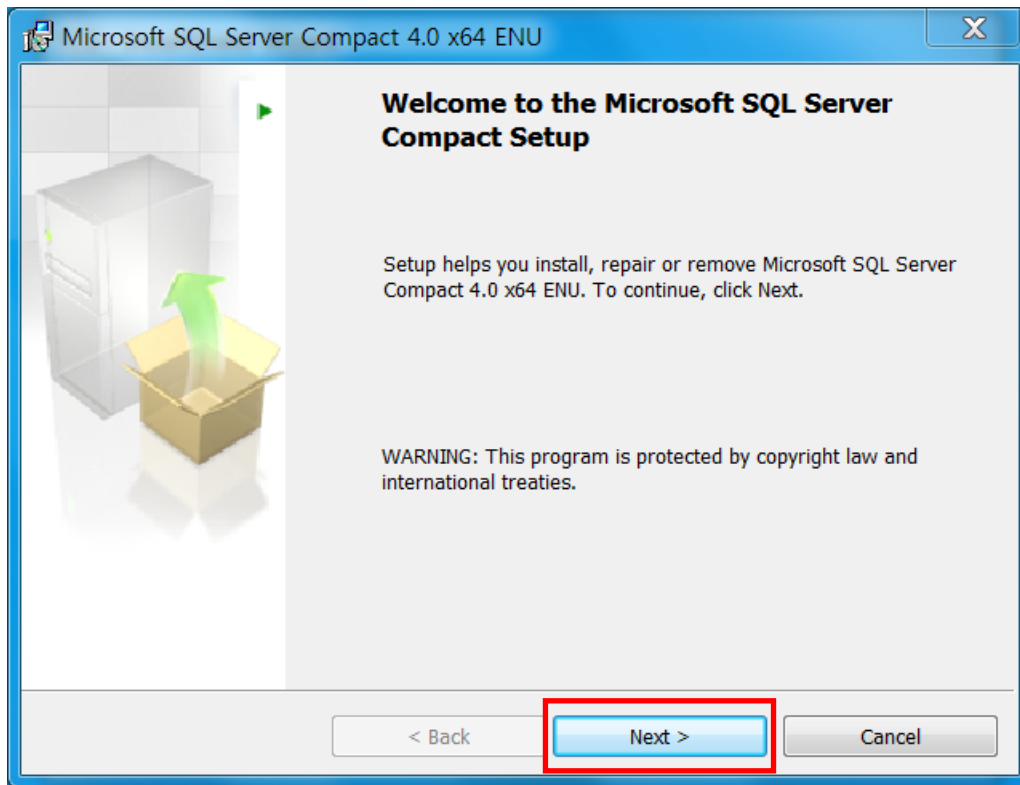


① Installation in progress (Taking 1 to 10 minutes)

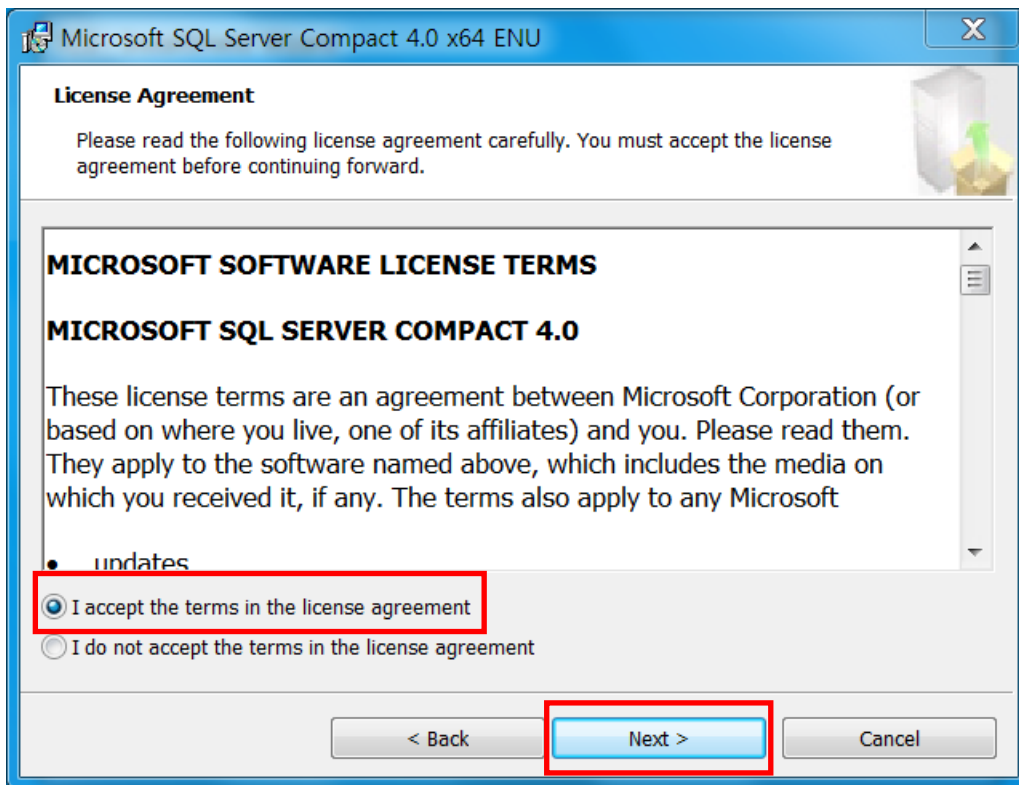
4.2 Microsoft SQL Server Compact 4.0

It is used for built-in DB (file DB) of Microsoft series program.

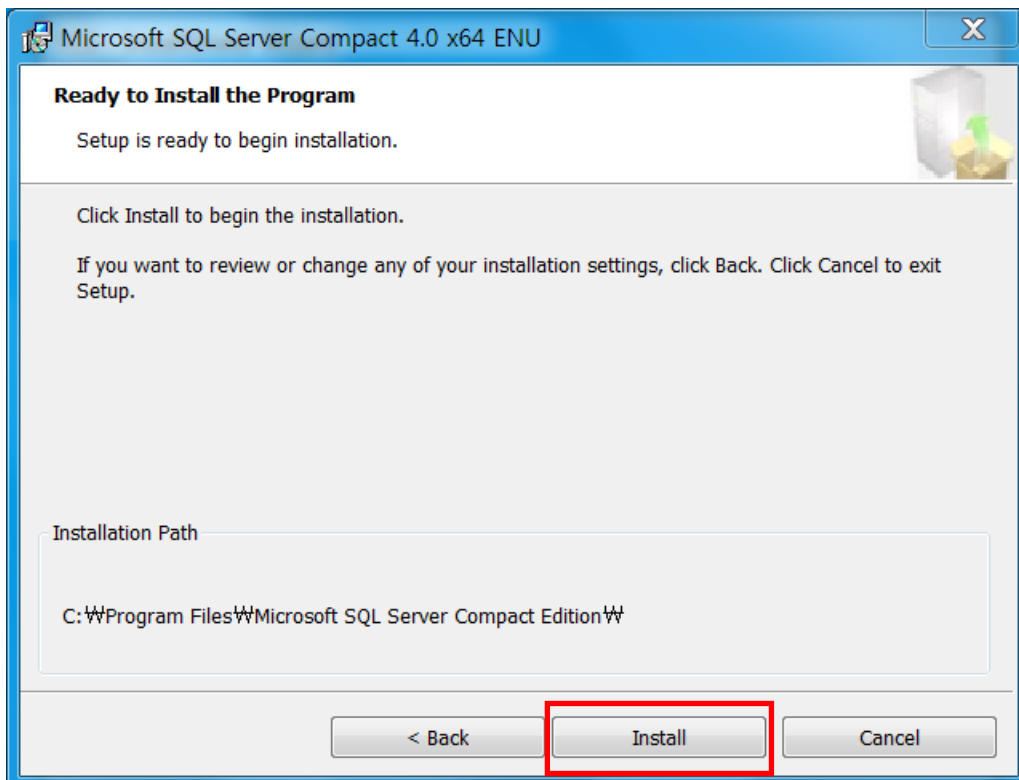
※ PC does not appear If PC already installed.



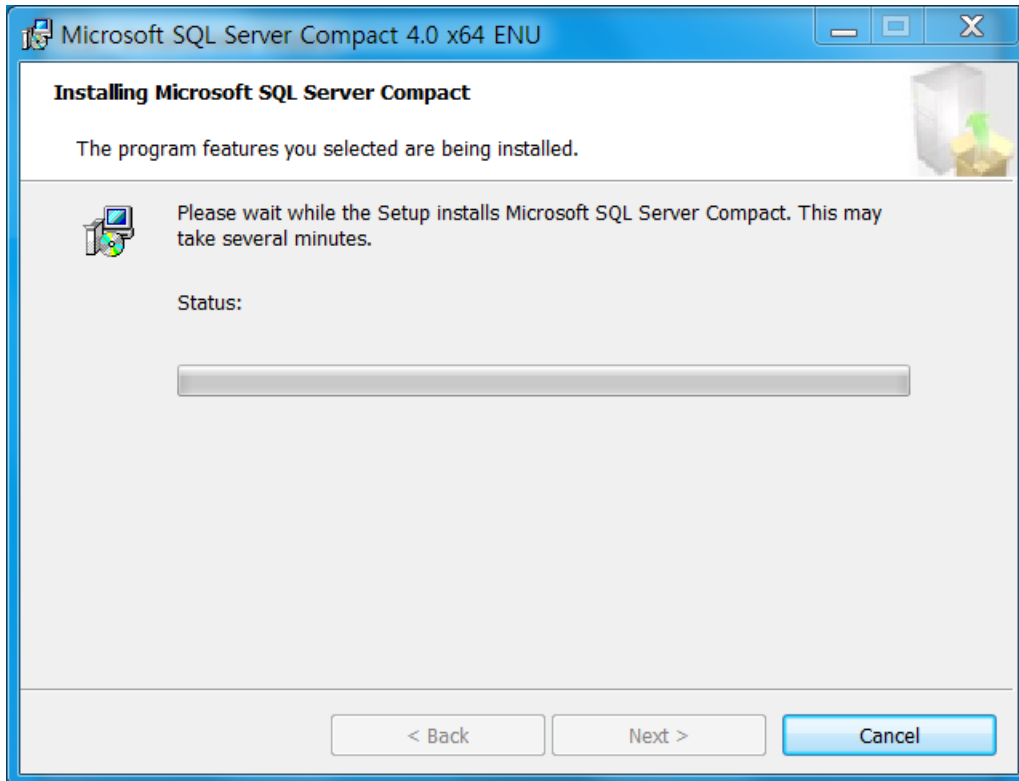
① Please click Next.



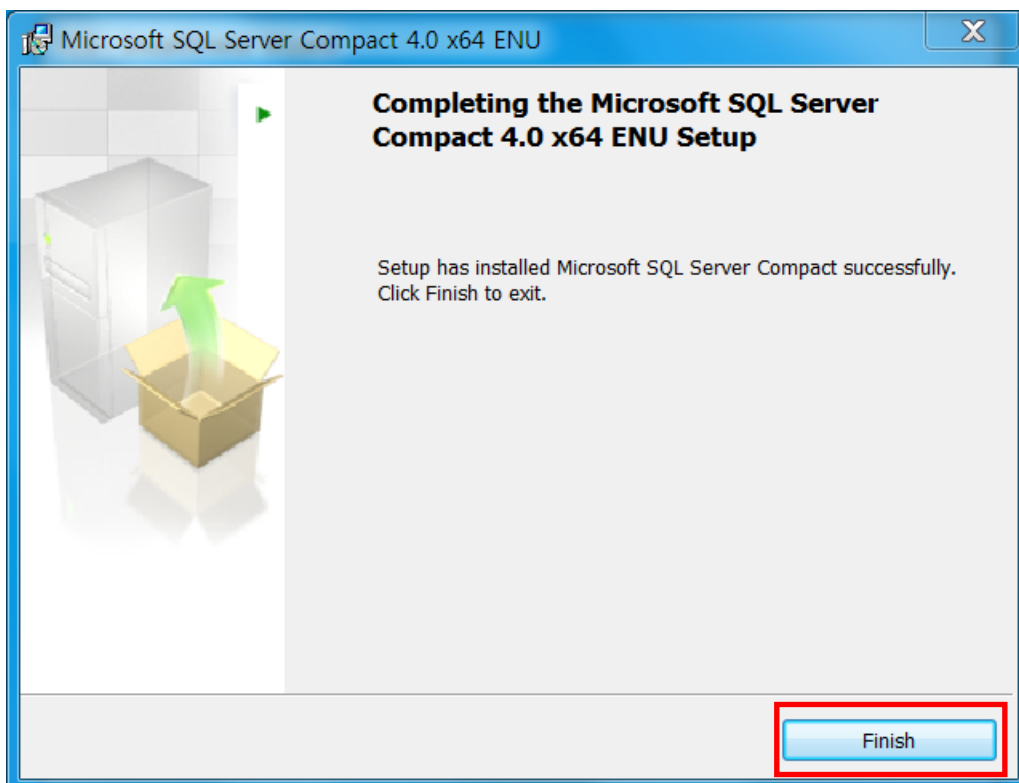
② Please select "I accept the terms in the license agreement" and then click Next.



③ After confirming the installation path, please click Install.

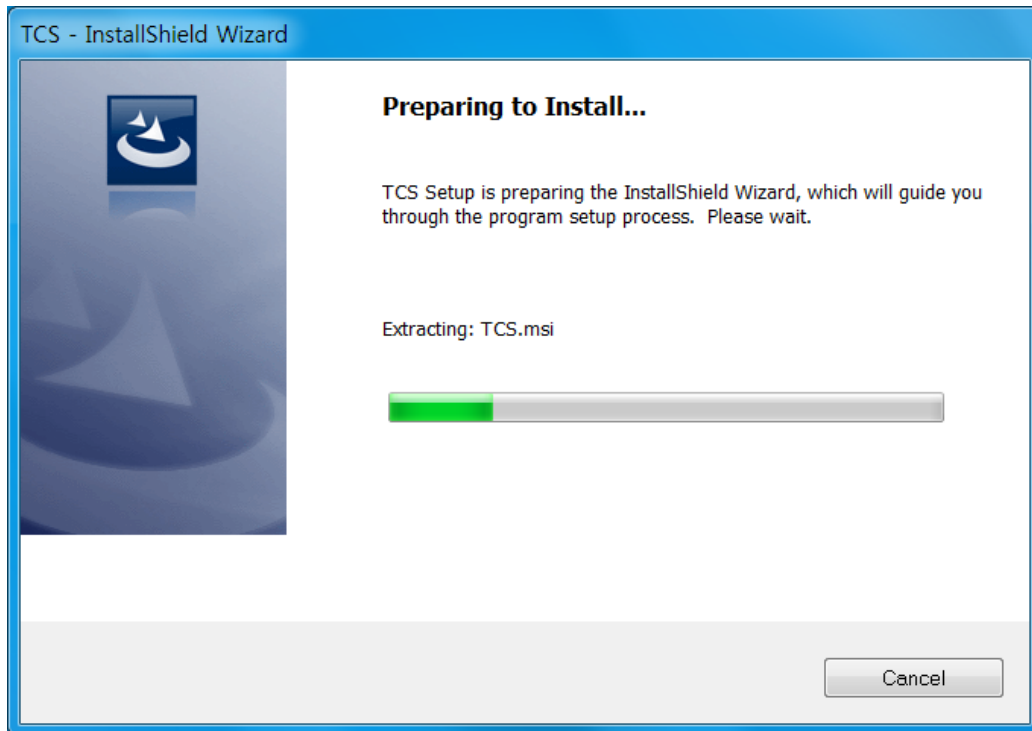


④ Installation in progress

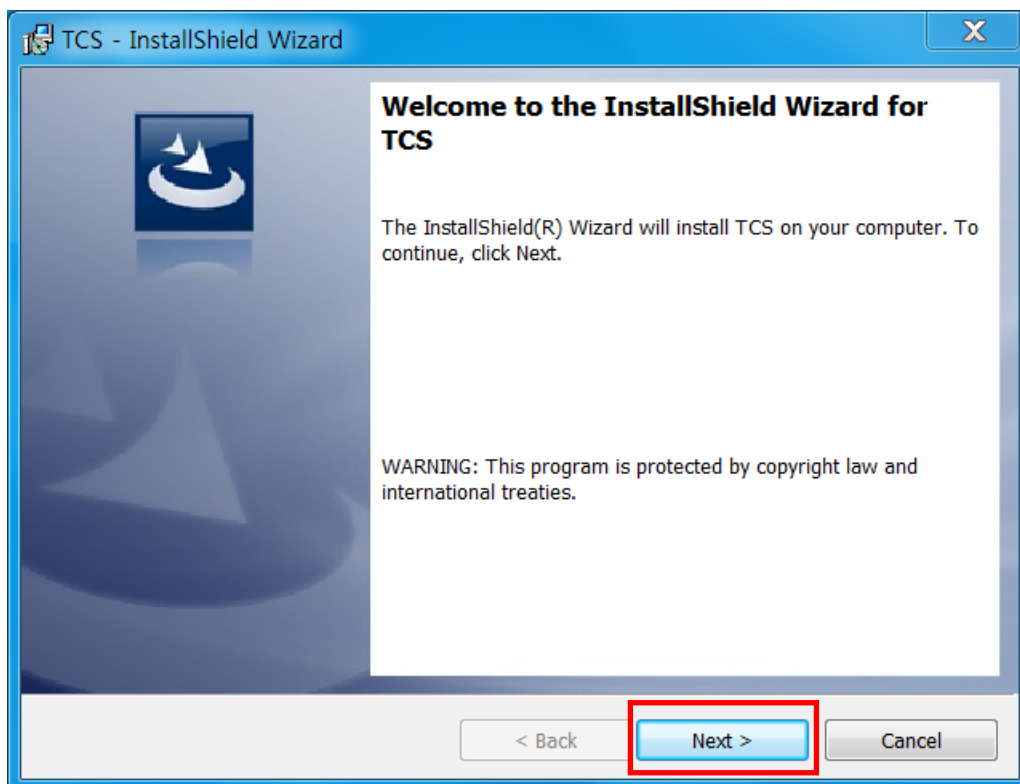


⑤ When the installation is complete, please click Finish.

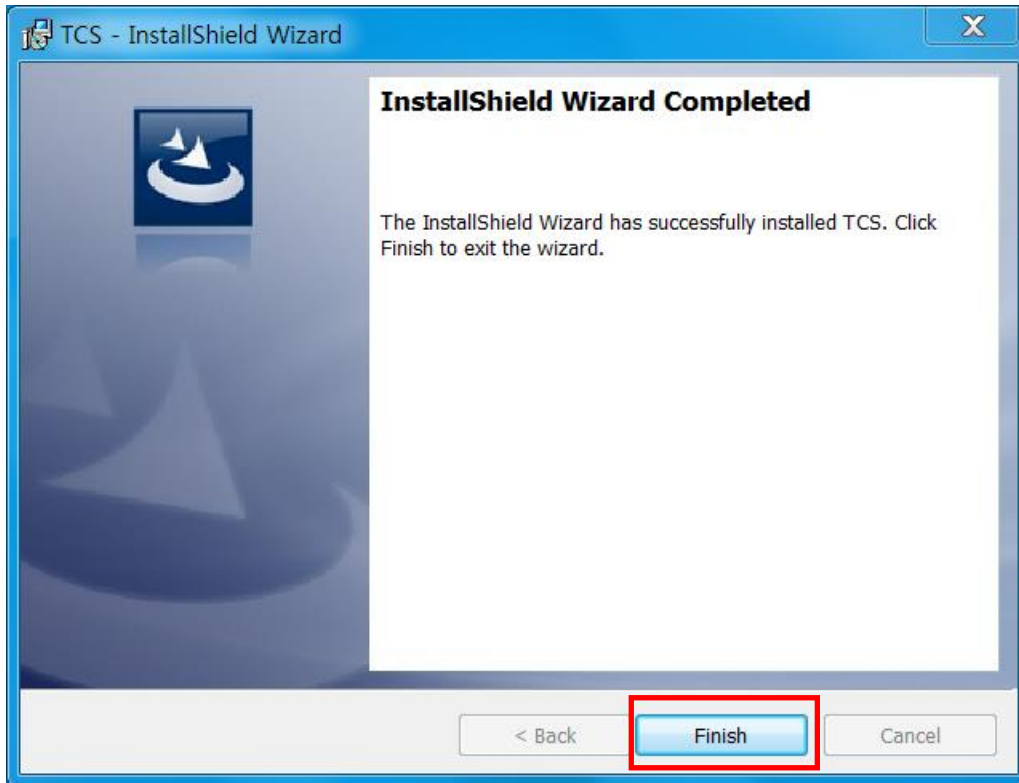
4.3 TCS



① Preparing to install



② Please click Next to begin the installation.



③ When the installation is complete, please click Finish

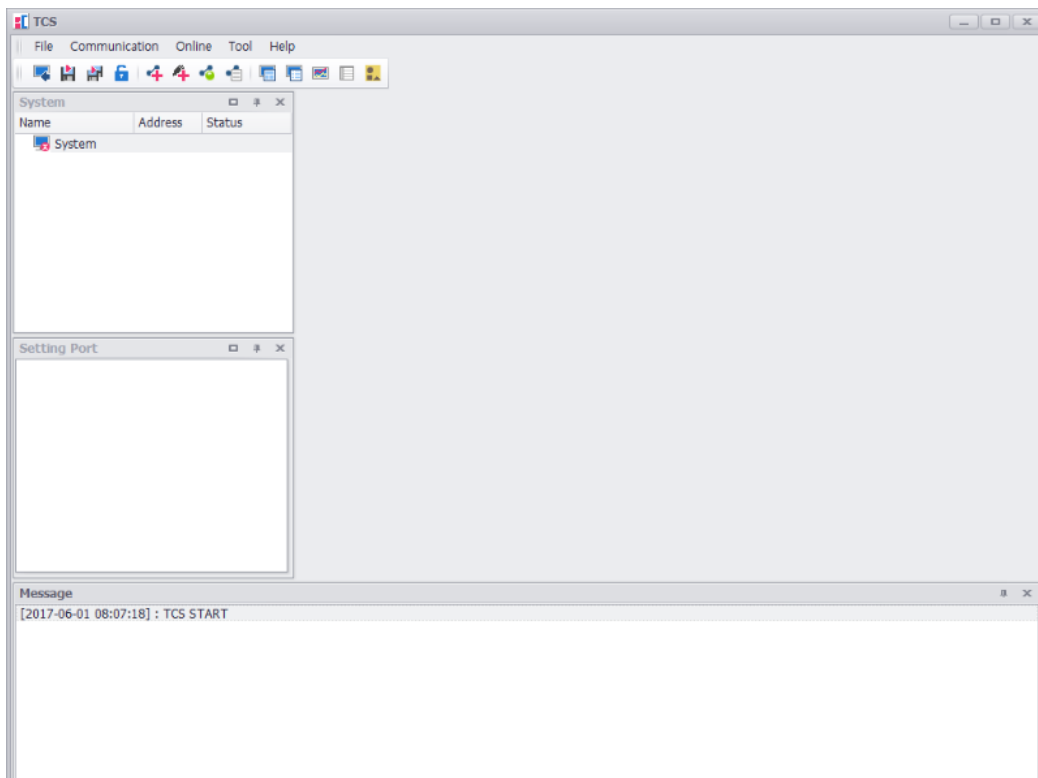
TCS Operations Manual

1. TCS Communication Program

1.1 The Program

TCS is a program that controls and monitors the equipments after connecting the Hanyoung Nux products and the PC. Although the existing communication program can connect the same kind of equipment and the same time, with the TCS it is possible to connect among models that use the same communication settings. Besides, it has been created the model that can connect and monitor the models at the same.

※ Although with the same communication type, if the internal standards are different, the same-time connection is not possible

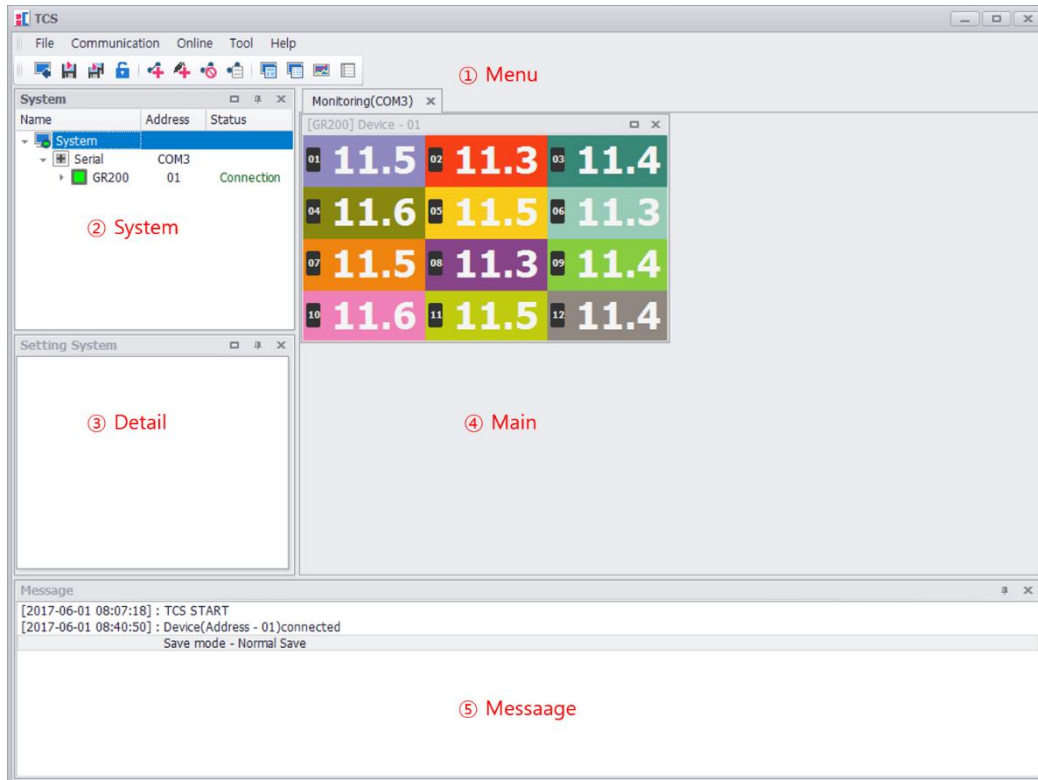


1.2 Menu

TCS Communication Program	The Program
	Menu
Main Screen	Main Screen
Setting	Port Setting
	Add Unit
Program Menu	File Menu
	Communication Menu
	Online Menu
	Tool Menu
	Help Menu
TCS Start	TCS Start
Monitoring	Monitoring
	TEXT Monitoring
	Multi Trend
Parameter	Parameter
Pattern	Pattern
Save Monitoring Data	Save Monitoring Data
Graph Viewer	Graph Viewer

2. Main Screen

You can see the Main Screen below.




- ① Menu : TCS Menu Area (Port, Unit, Channel configuration)
- ② System : Manage the ports and equipment connected to the TCS and check the information of the equipment channels (Port Detail, Record Detail)
- ③ Detail : Check the detailed information of the system area ports and devices (Monitoring, Multi Monitoring, Multi Trend, Parameter)
- ④ Main : The main screen, which expresses the actual monitoring information of the devices in a variety of ways
- ⑤ Message : Output message and time for event.
(Popup menu for 'Message initialization', 'Save message' when right clicking on a mouse)

3. Setting

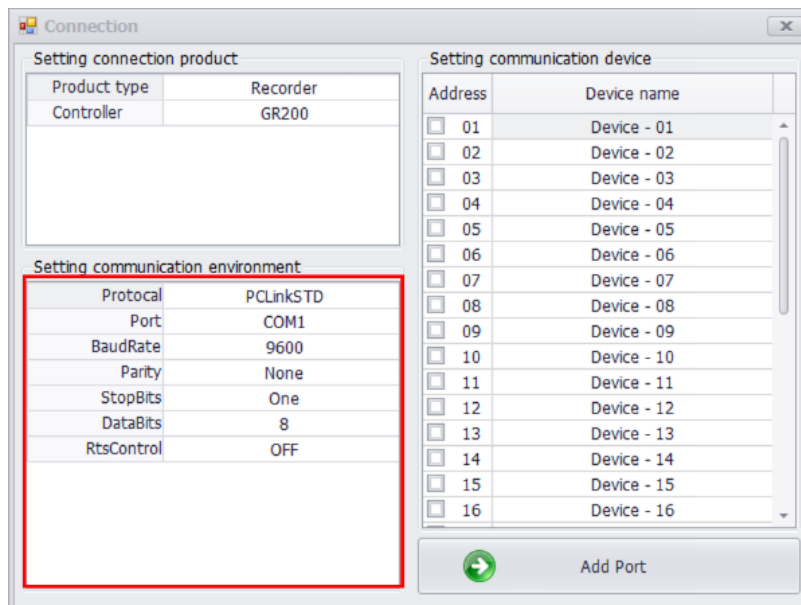
3.1 Port Setting

3.1.1 Add Serial Communication

When the communication is not connected, you can call the additional communication window by selecting

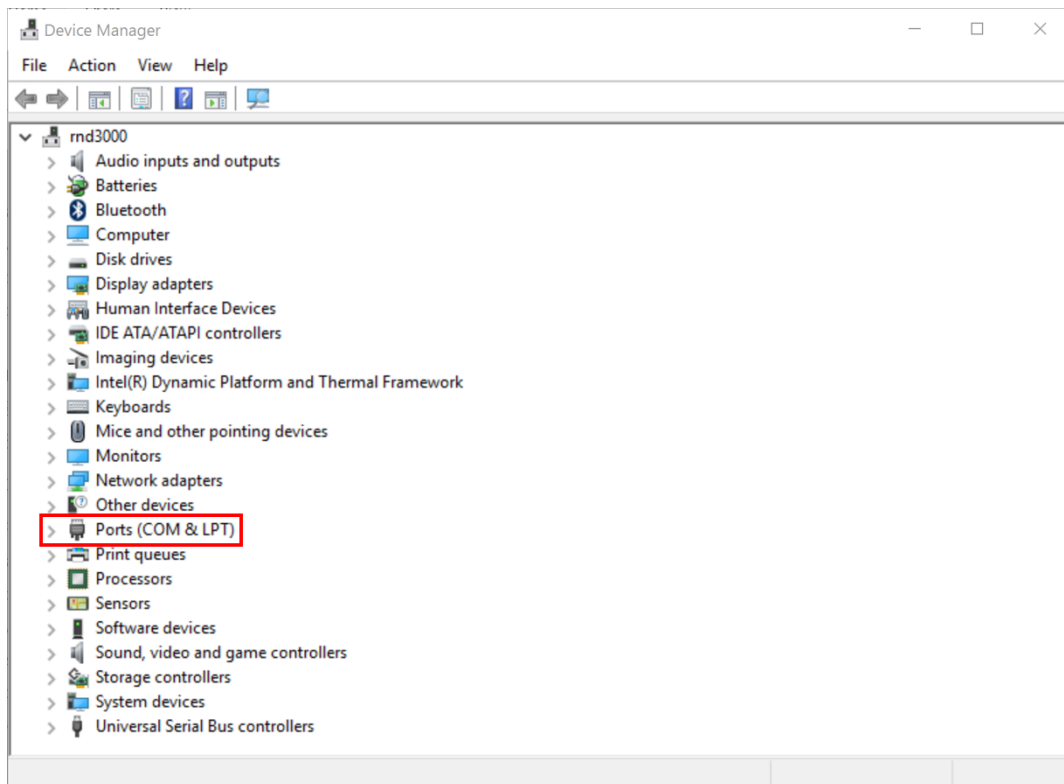
“Communication → Add serial communication” in the menu, or by selecting the communication add icon () of the toolbar.

You can set the number of the products to be connected and the device number (1 ~ 32)

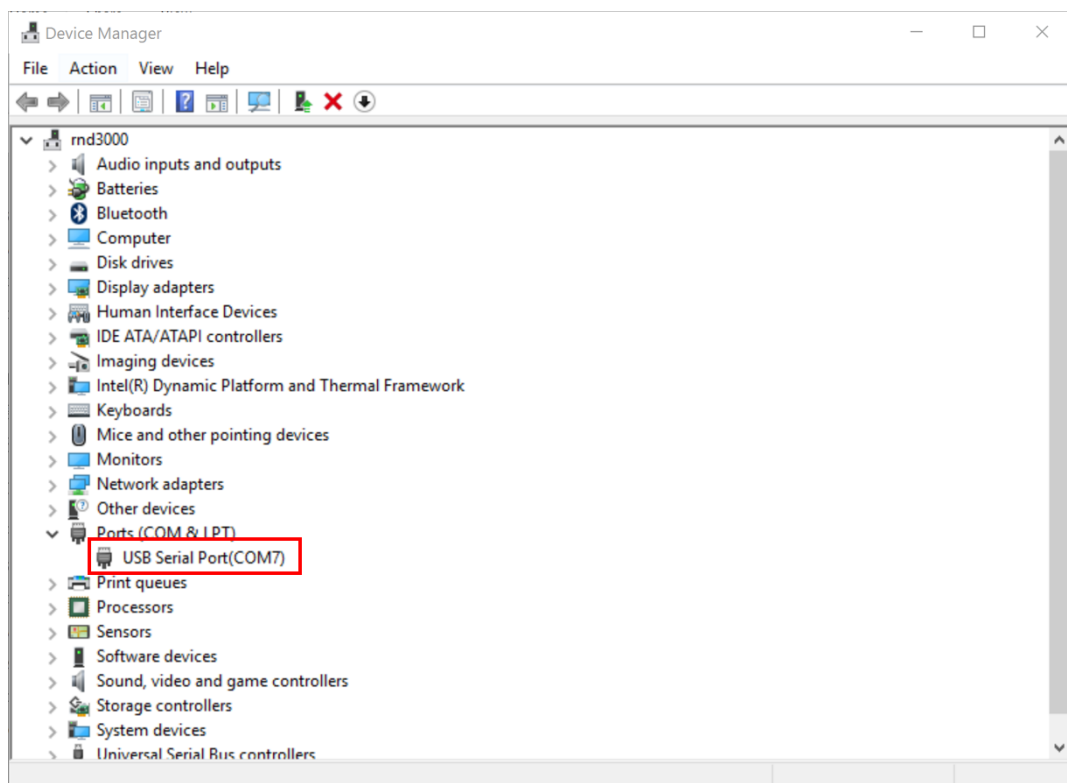


3.1.1.1 Check serial communication port

- ① Control Panel → Device Manager → If you have the Ports (COM & LPT) entry



- ② Click the Port (COM & LPT) item to check the PC serial port number.

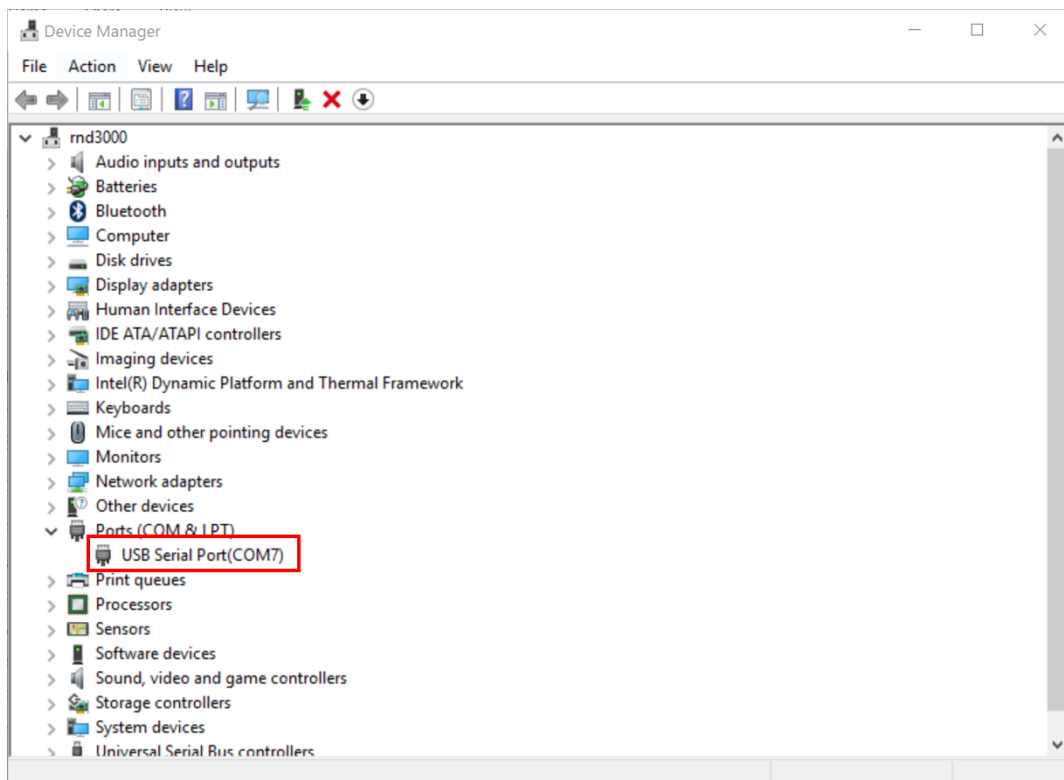


3.1.1.2 If there is no serial communication port

- ① Control Panel → Device Manager → If there is no port (COM & LPT) item, use USB to Serial device.




- ② Insert USB to Serial device into USB port of PC
- ③ Install the driver provided with USB to Serial products.
- ④ If the driver is properly installed, you can check the port number in the Port (COM & LPT) item as shown below.

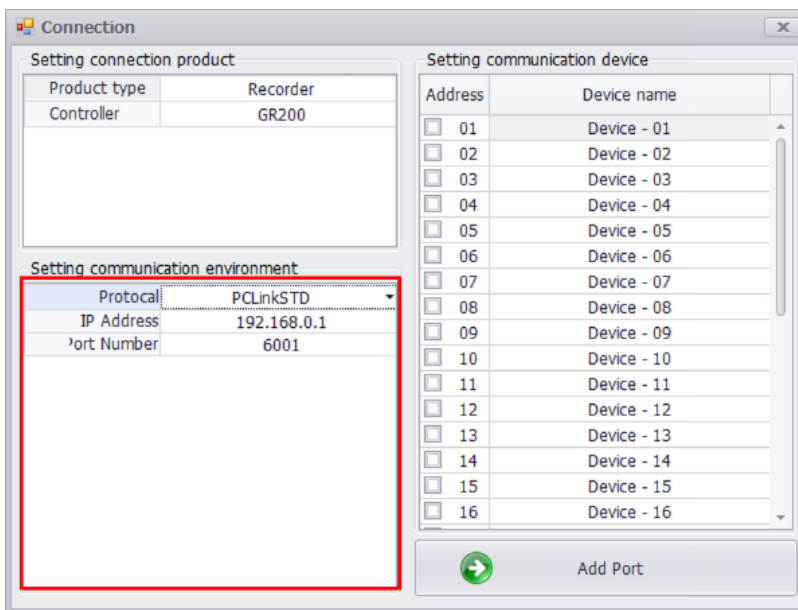


3.1.2 Add Ethernet Communication

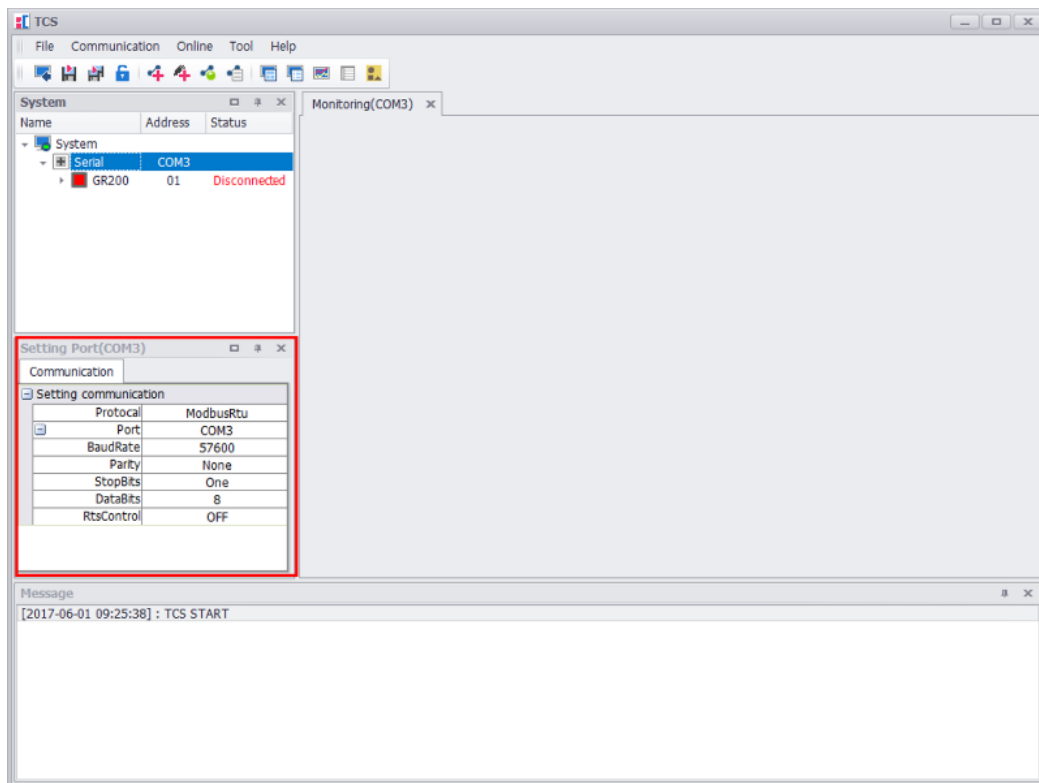
When the communication is not connected, you can call the additional communication window by selecting

“Communication → Add ethernet communication” in the menu, or by selecting the communication add icon () of the toolbar.

You can set the number of the products to be connected and the device number (1 ~ 32)




After setting the communication, you can change it in the system screen of the main menu, and you can change the connected equipment too.

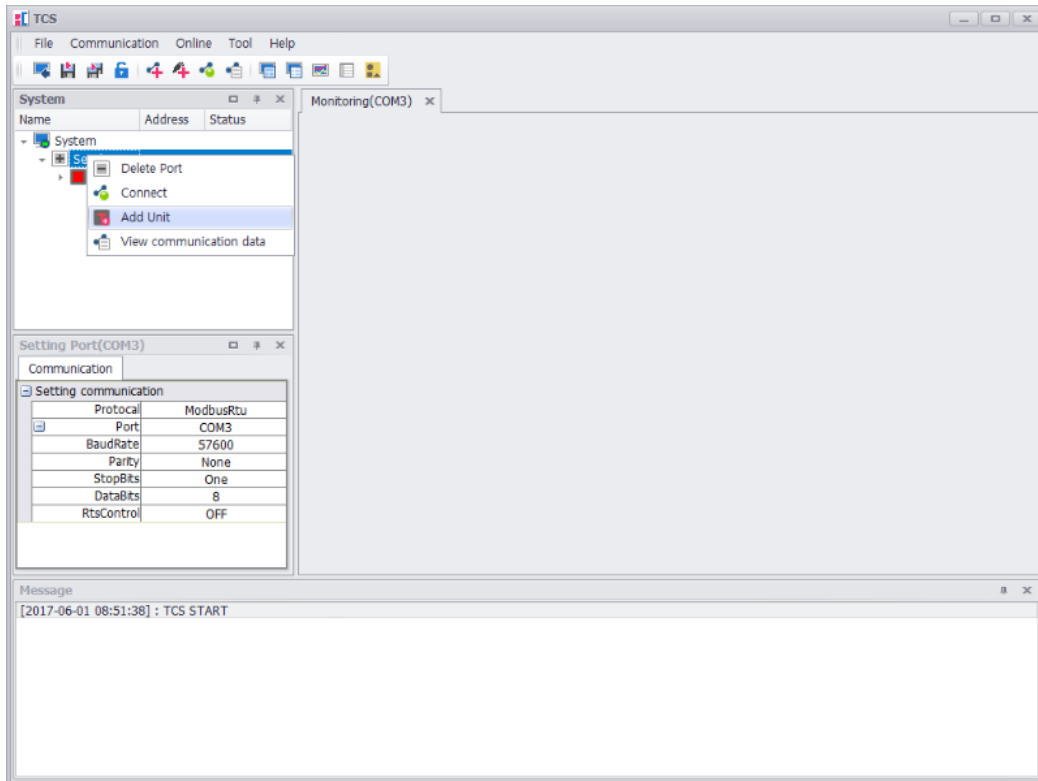


※ In the case of equipment with the same characteristics, because the TH300 , TH500 , TD300 , TD500 , TS500 do not use the standard communication, the communication may not be compatible with with other equipment.

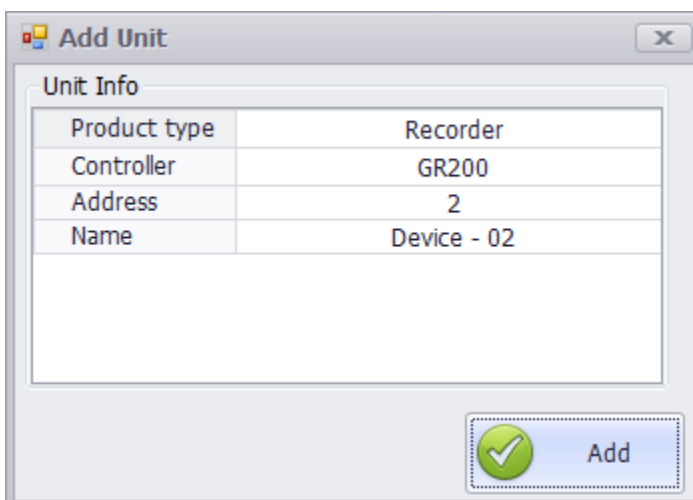
3.2 Add Unit

In order to add an unit to the TCS port, when the communication is not connected, you can add it from the communication port menu.

From the equipment add port in the system screen of the main screen, go to the port to be added, and do the right-click with the mouse and select the Add Unit () menu




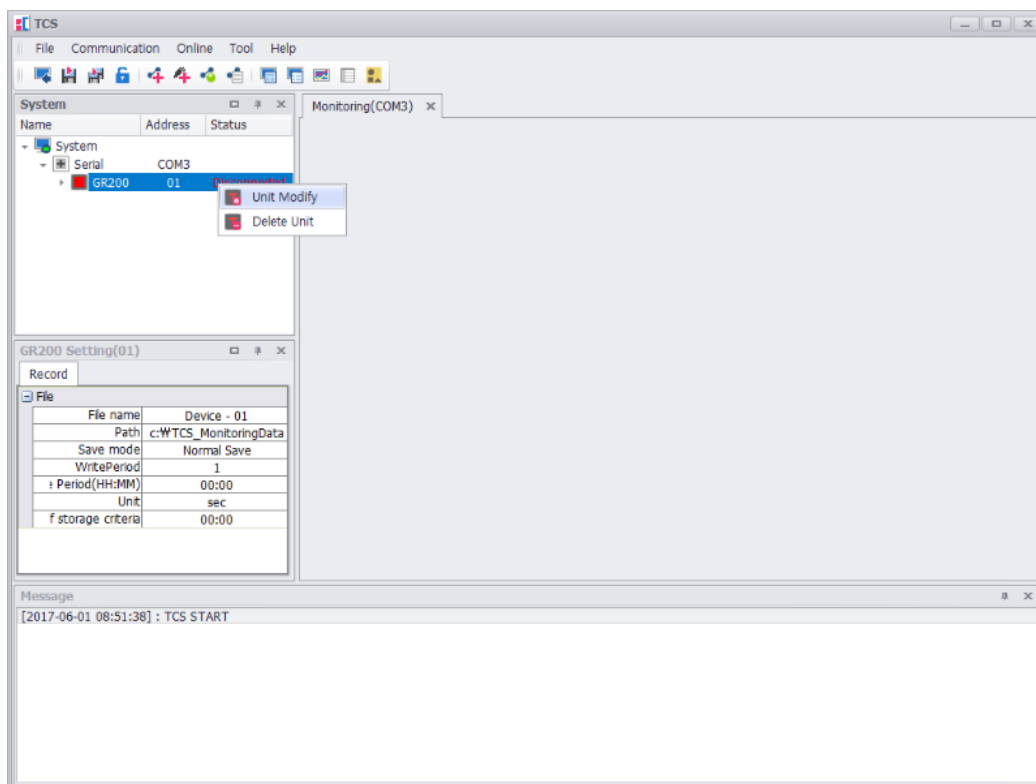
Then the unit add window appears.



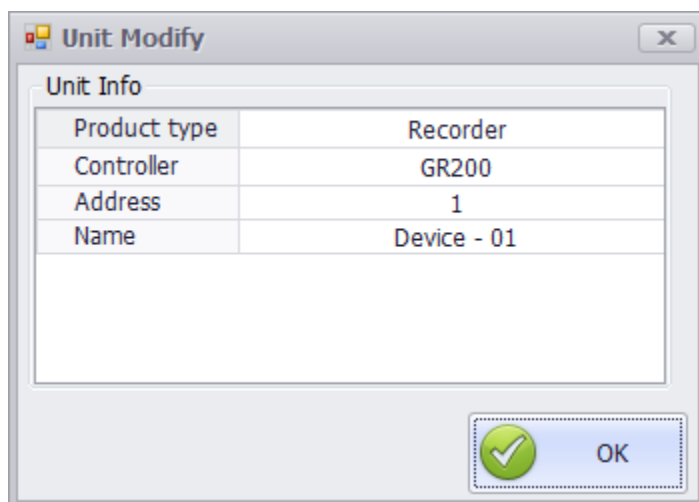
From the add unit window, you can set the product type, product name, device number and unit name. After finishing all the settings, by selecting the add button you can add the unit to the port.

※ From the add unit window, you can set the communication. Regarding the communication setting, please refer to the related instructions.

Regarding the modification of the currently set unit, from the system screen of the main screen, go to the unit to be modified, do the right-click with the mouse and select the Unit Modify () menu>



Then the unit modification window appears.



From the unit modification window, you can set the device number and unit name.

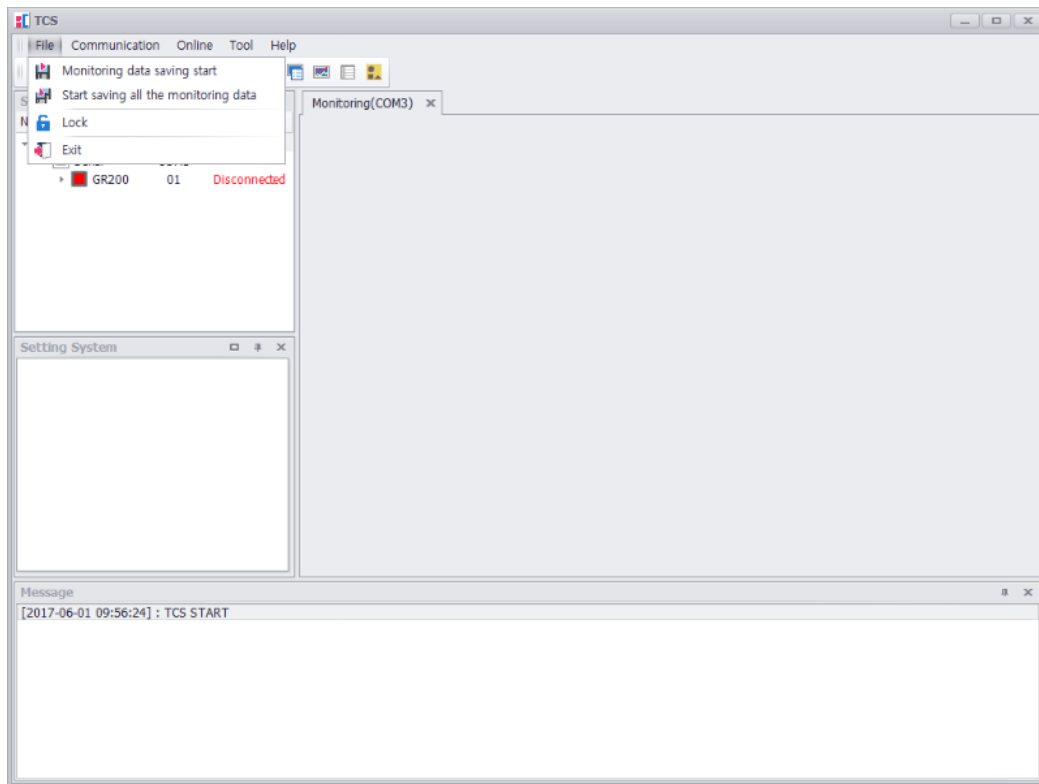
After finishing all the unit modifications, by selecting OK you can modify the unit.

※ From the unit modification window, because it is possible to change the unit device number and unit name only, in order to modify the product type, you must add a new one after cancelling the unit.

In order to cancel the unit, from the unit window select the unit cancel menu.

4. Program Menu

4.1 File Menu



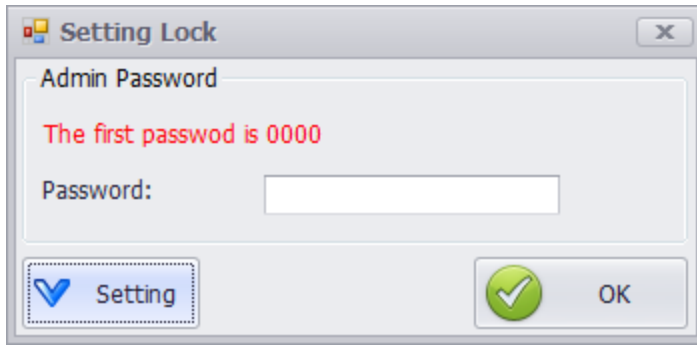
- ① "File" → "Monitoring Data Save Start" : the currently selected equipment monitoring data save starts (when the equipment is connecting)
- ② "File" → " Start Saving all the Monitoring Data" : start saving all the equipment monitoring data currently connected to the port. (when even one equipment is connecting)
- ③ "File " → "Lock" all the TCS functions lock.

If the TCS is locked, all the functions, except the unlock function, do not work (switching-off also do not work)

※ The first password is "0000"

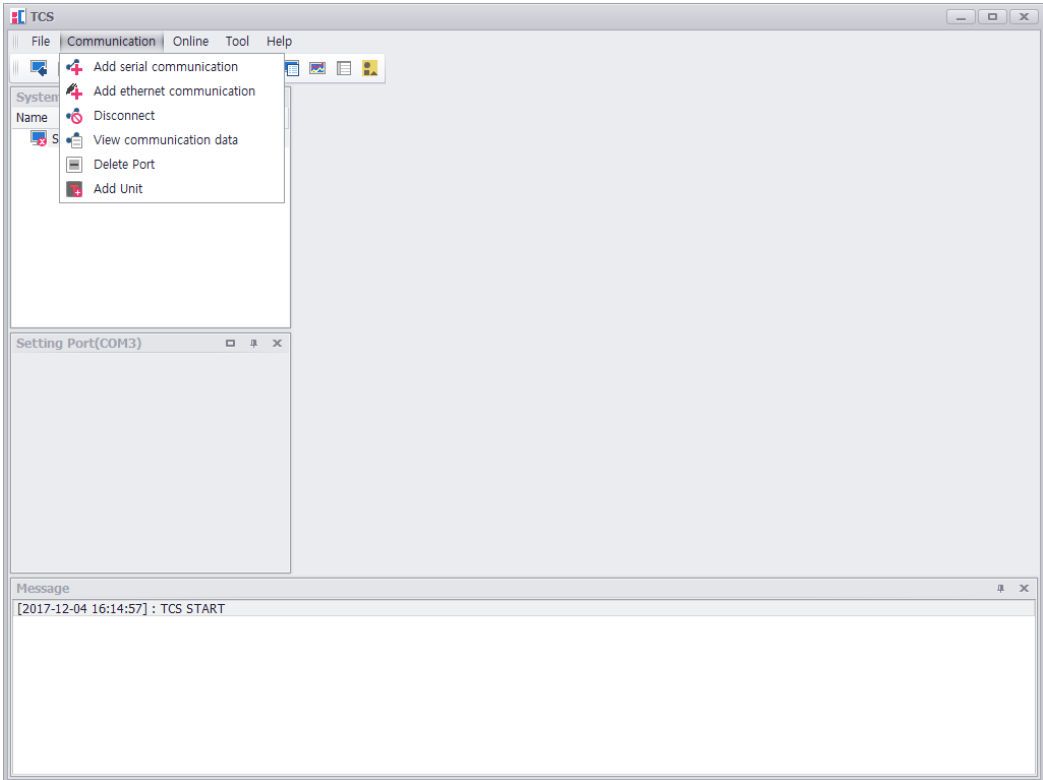
※ If you forget the password, you have to re-install the TCS after removing it.

- ④ "File " → "Releases": release the locked TCS.




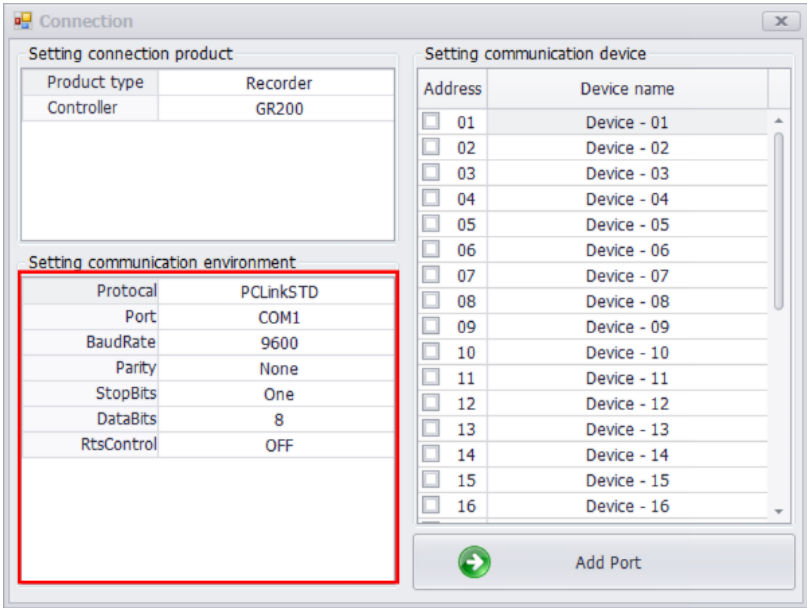
It is possible to change the password from the environment setting menu.

4.2 Communication Menu

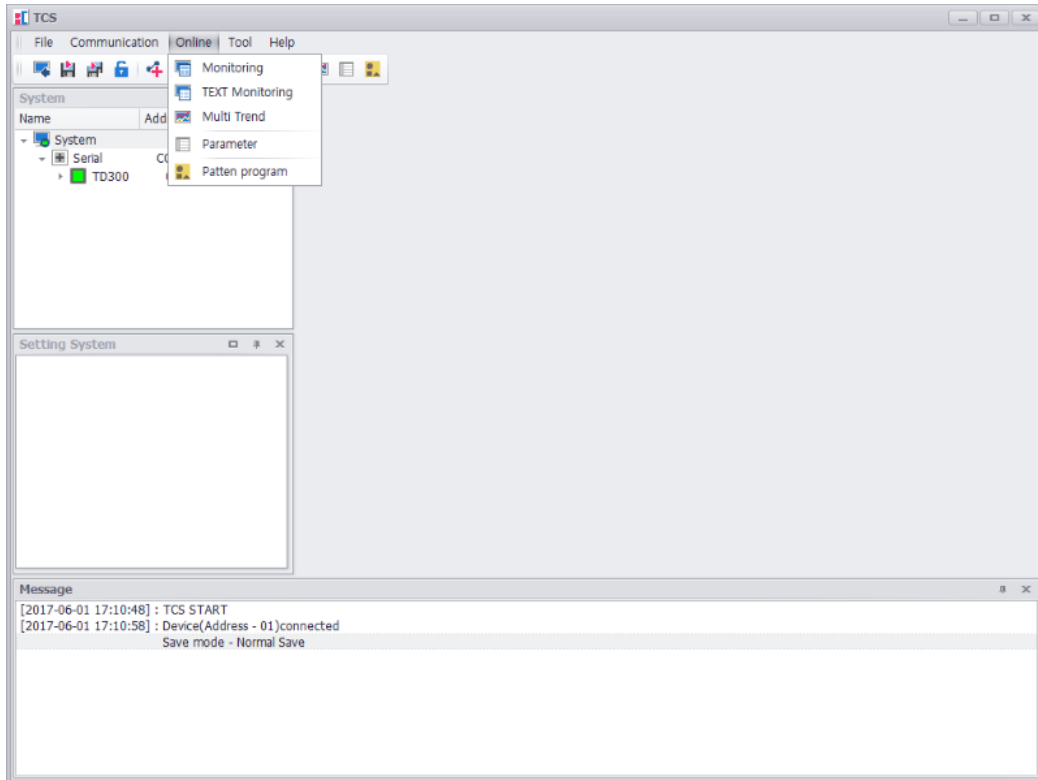


There are two types of communication to add: serial and Ethernet.

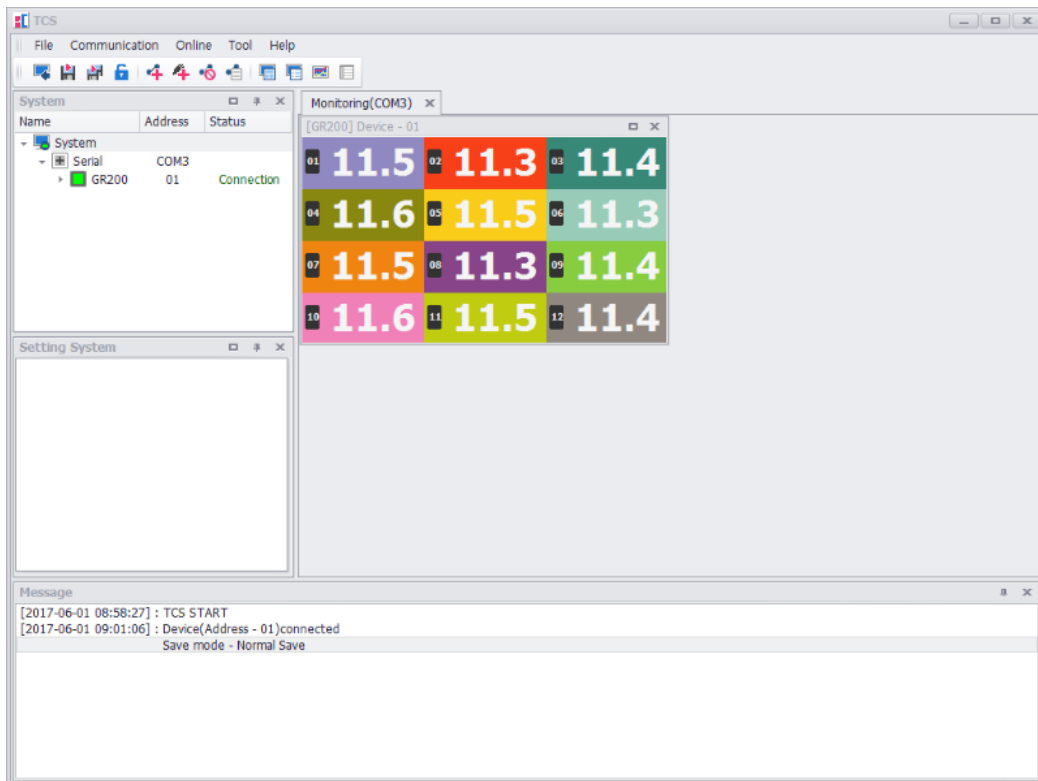
① " Communication" → "Add serial communication" : the communication add screen appears. ()



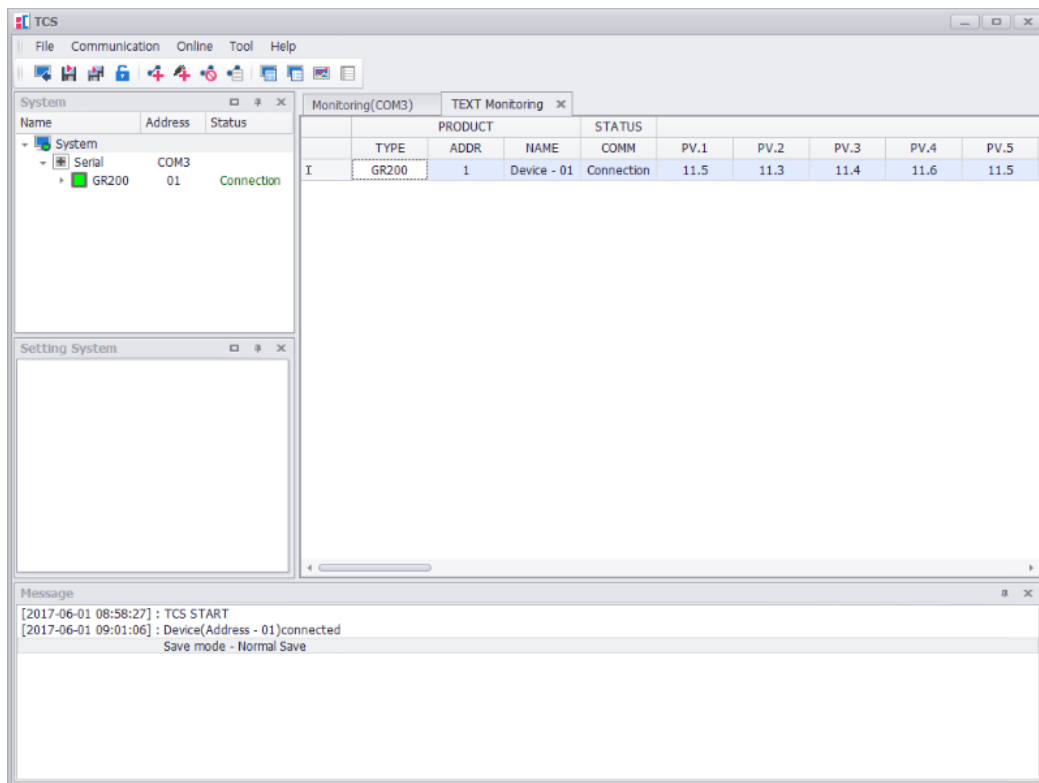
4.3 Online Menu



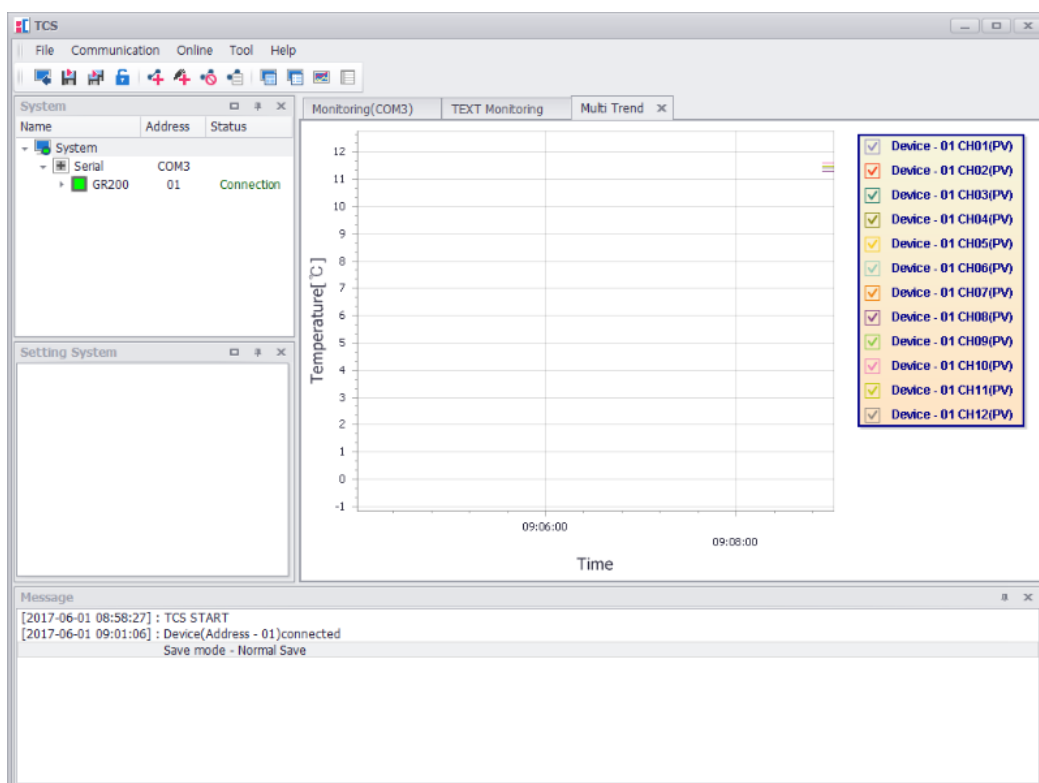
① " Online" → "Monitoring" : the basic monitoring screen of the selected equipment appears.



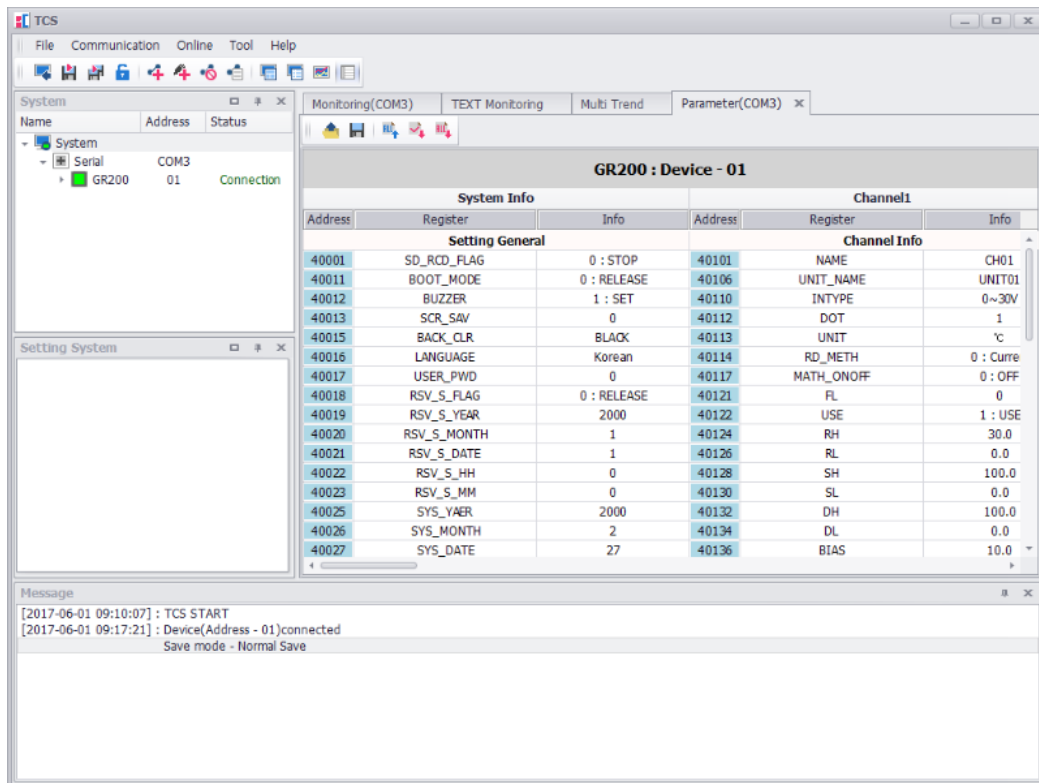
- ② " Online " → "TEXT Monitoring : the text-monitoring screen appears (all equipment monitoring, list view)"



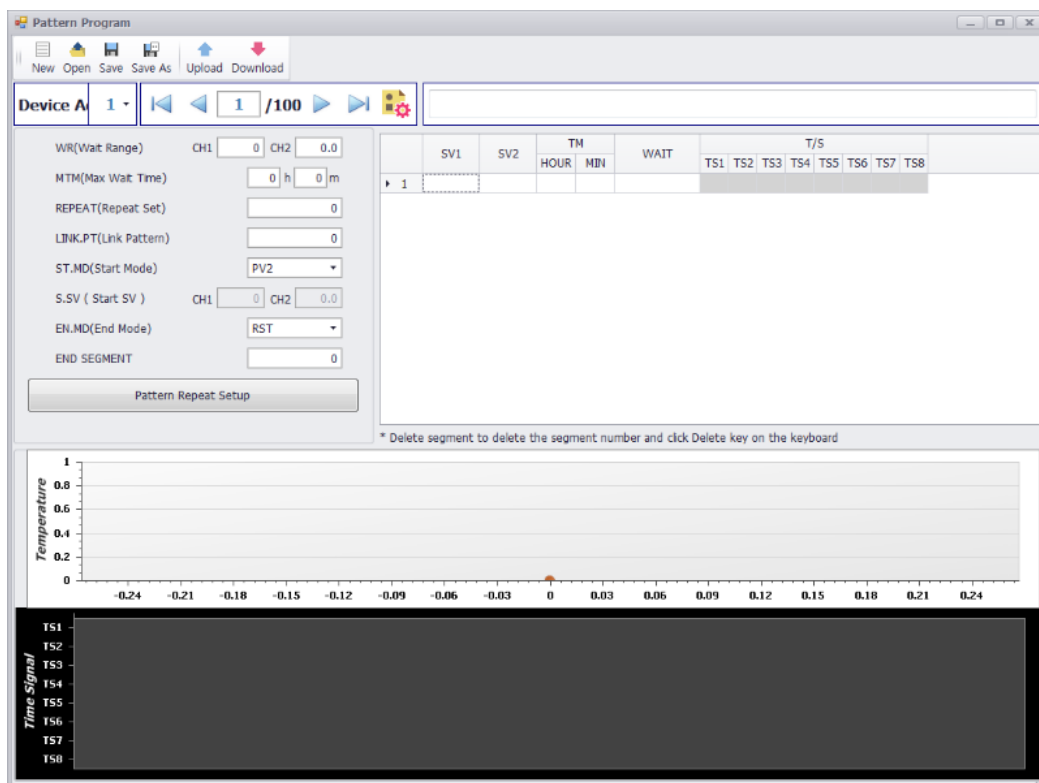
- ③ " Online " → "Multi trend" : the multi trend screen appears (all equipment monitoring, trend view)



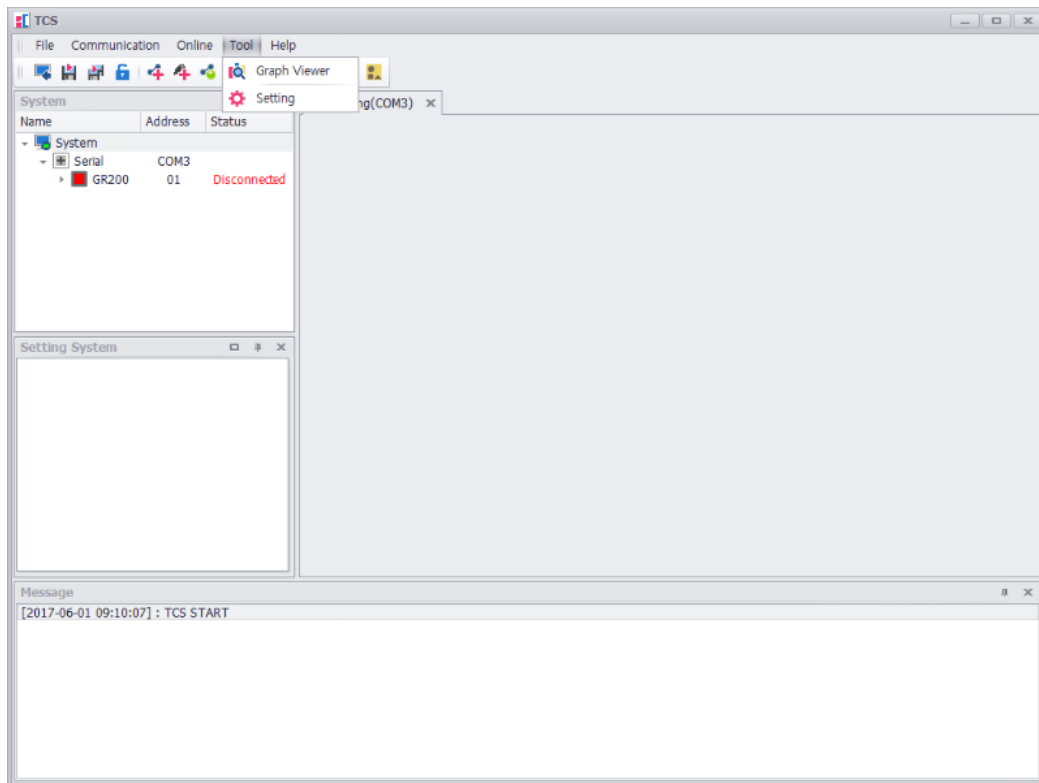
- ④ " Online " → "Parameter" : the equipment parameter window appears. (for further explanations, please refer to the parameter instructions)



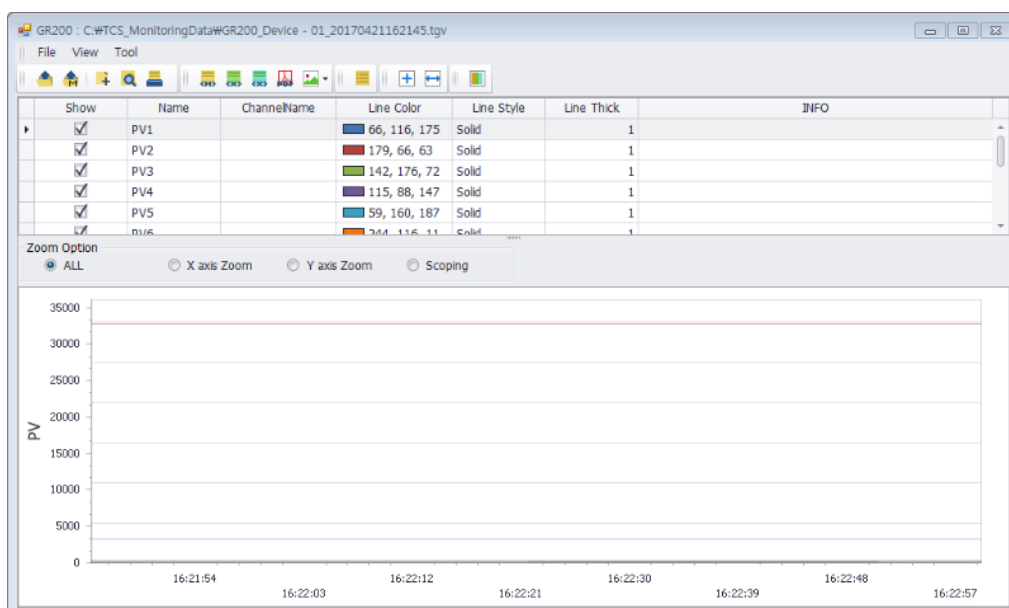
- ⑤ " Online " → "Pattern" : the equipment pattern program window appears. (for details, please refer to the pattern instructions)



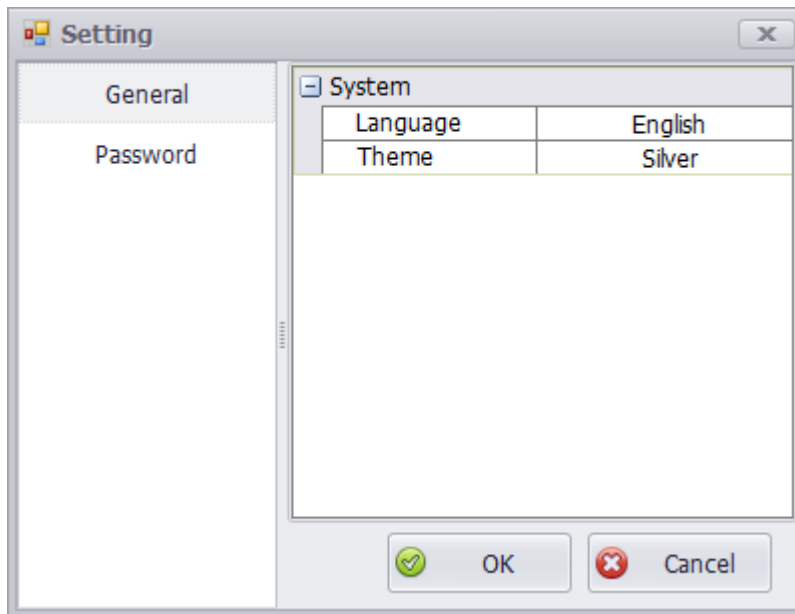
4.4 Tool Menu



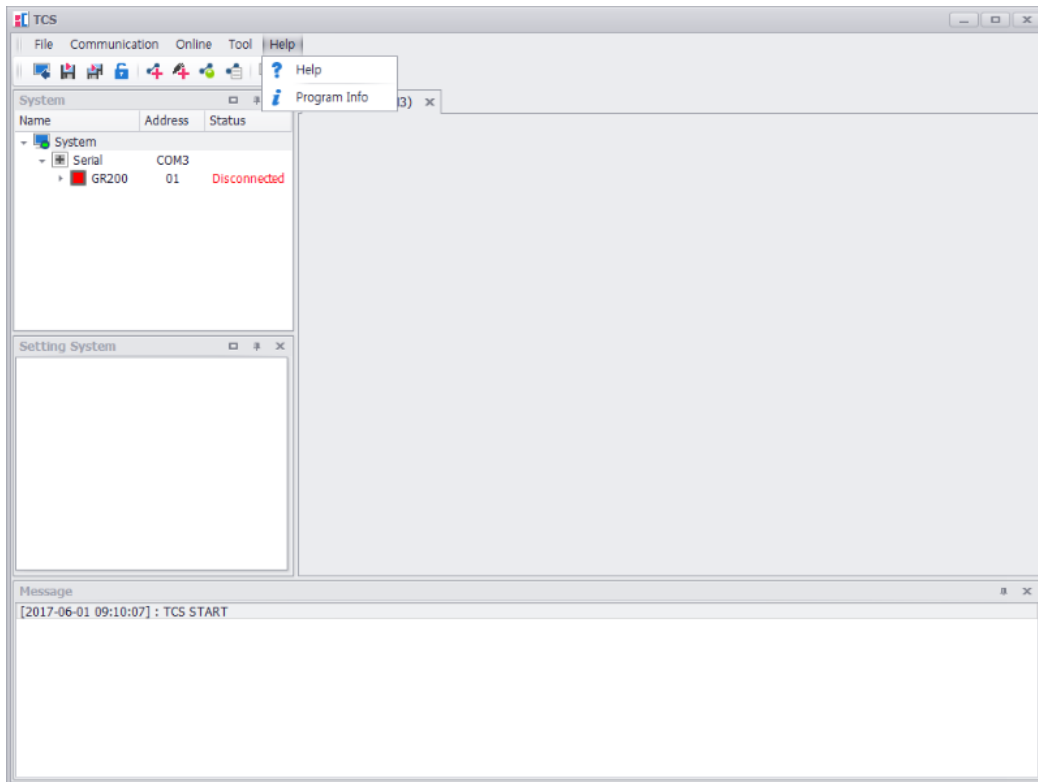
- ① "tool" → "Graph Viewer" : the graph viewer appears (for details, please refer to the graph viewer instructions)



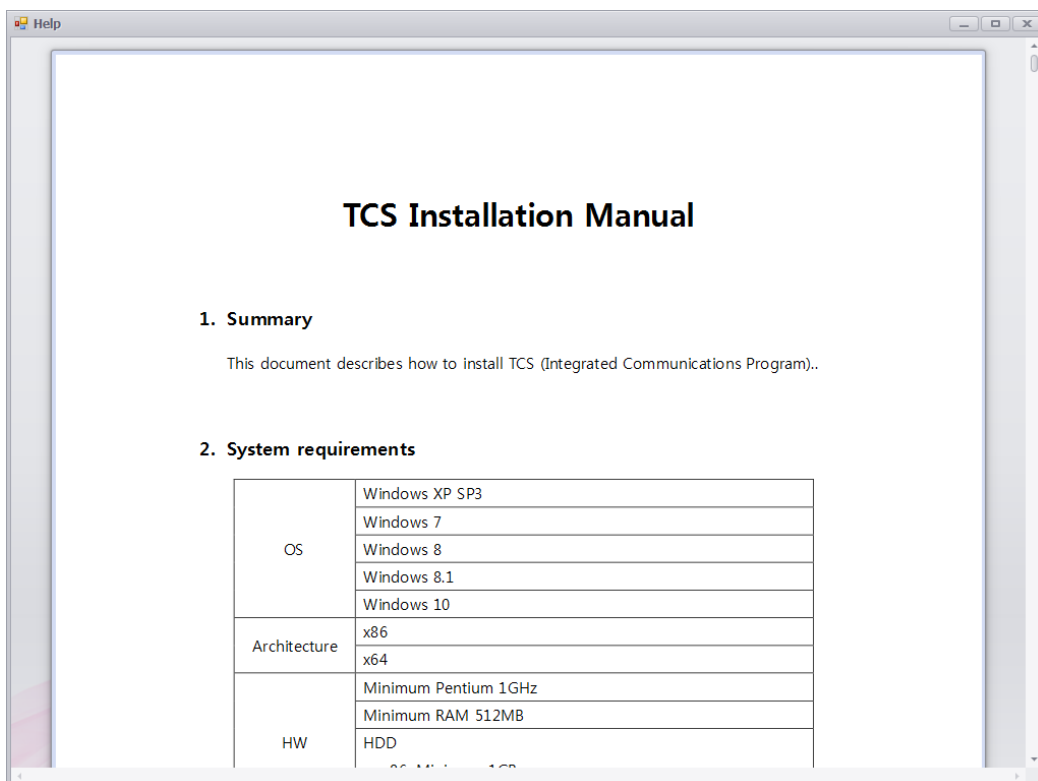
② "tool" → "Setting" the setting viewer appears



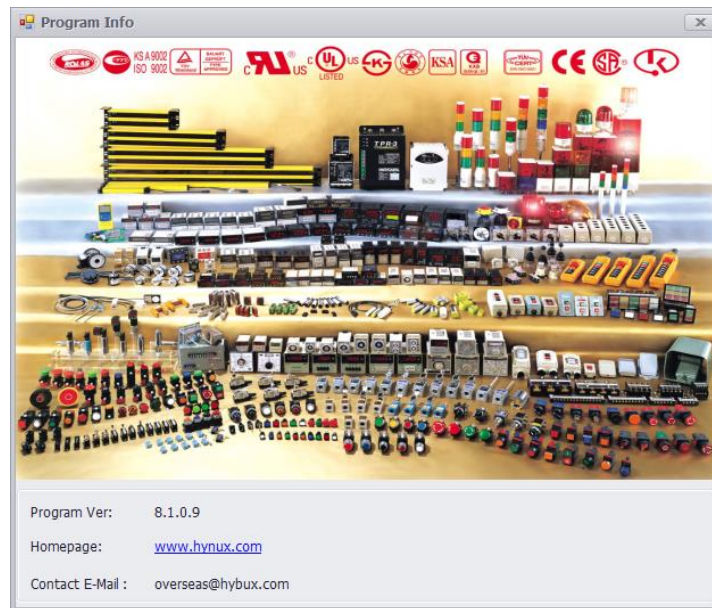
4.5 Help Menu



- ① "Help" → "Help" : the TCS help page appears.

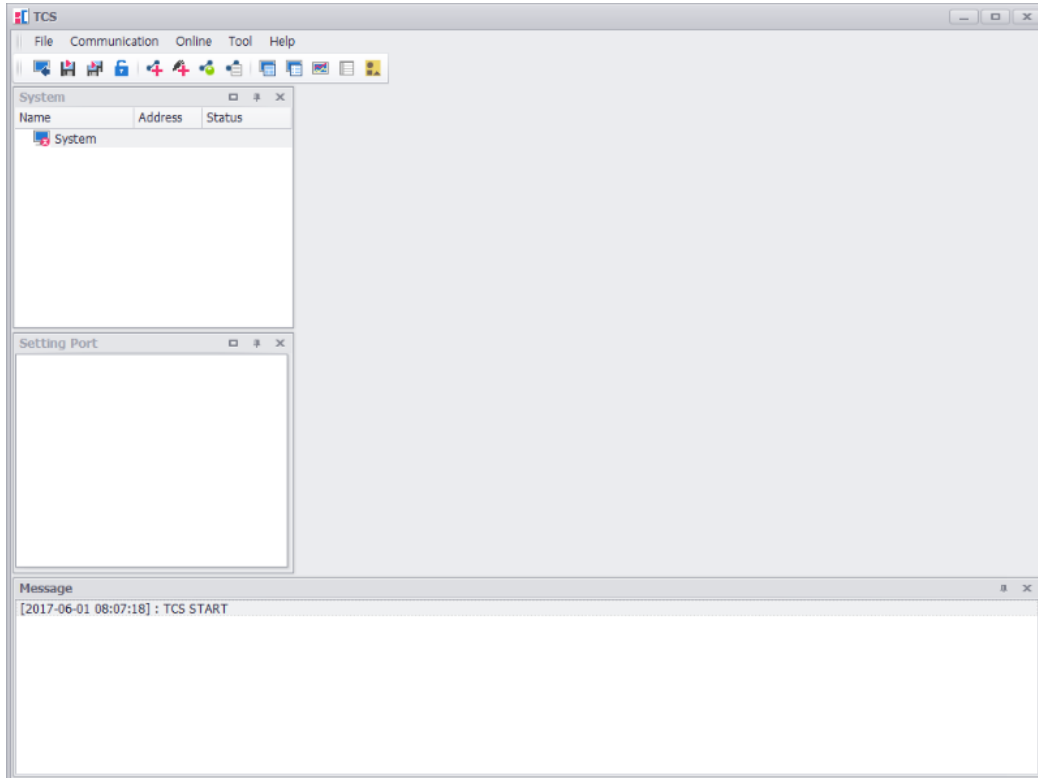


② "Help" → "Program Info" : the program information window appears.





5. TCS Start

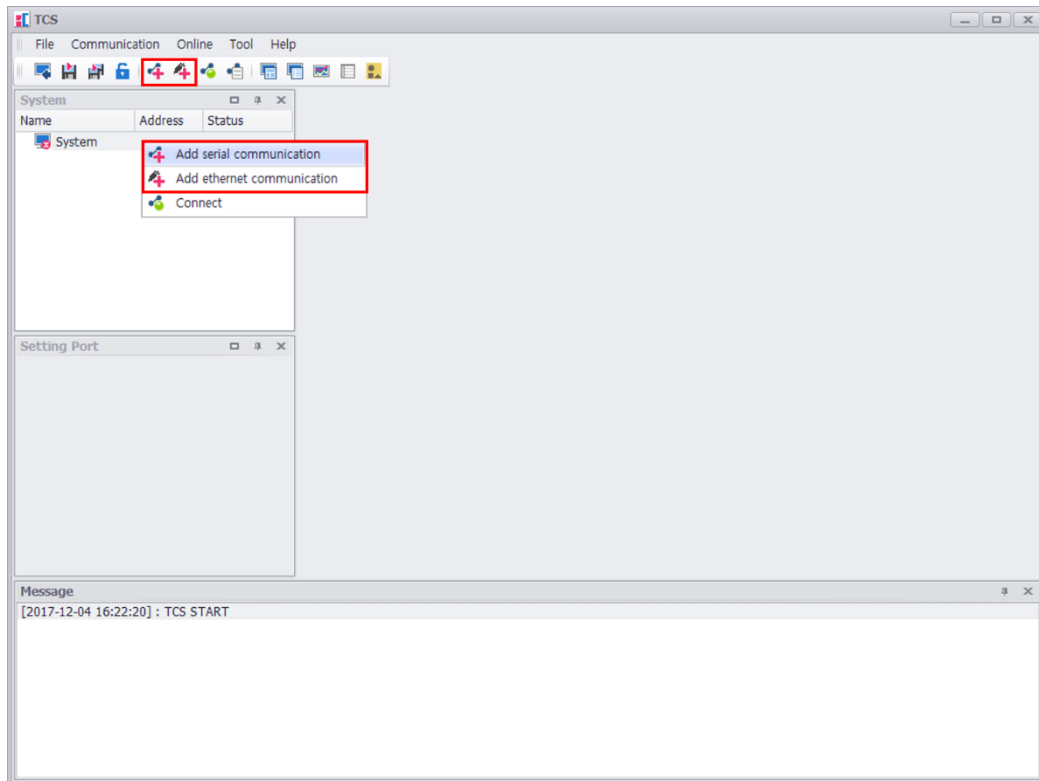
Below is the screen that you can see when you install the TCS for the first time



Because there is no port and equipment set yet, add ports and equipment. .

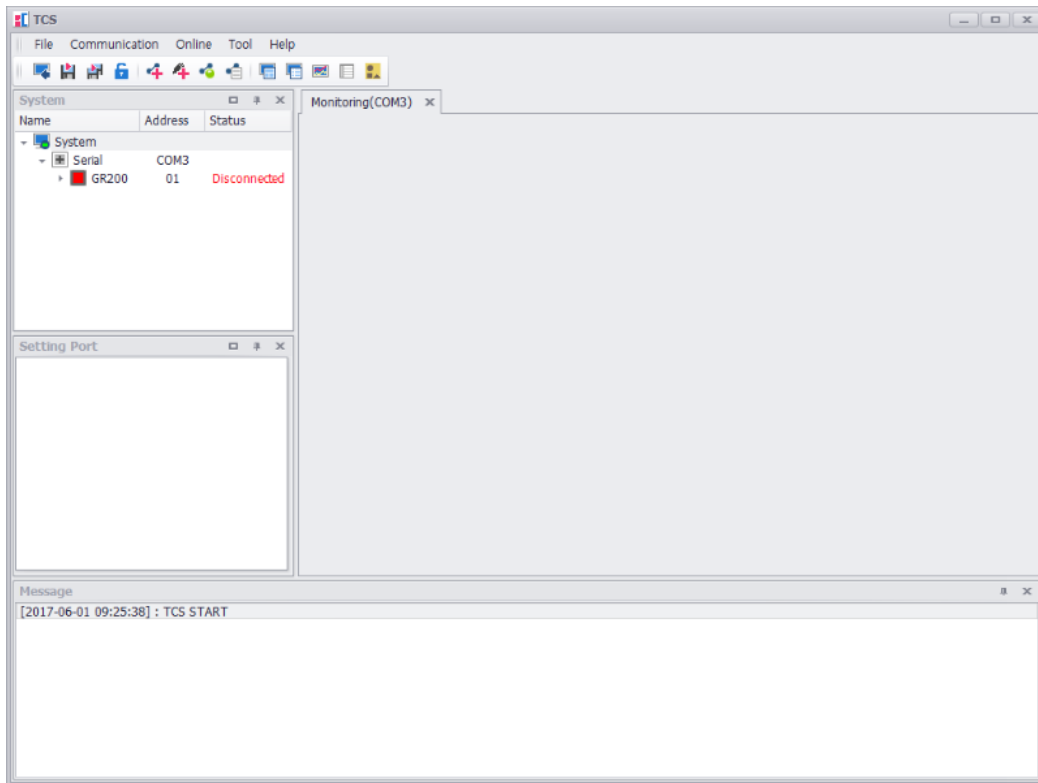
From a non-connected state, select the "Communication -> Add communication" in the menu or select the

(), () add communication icon, and the communication add window appears




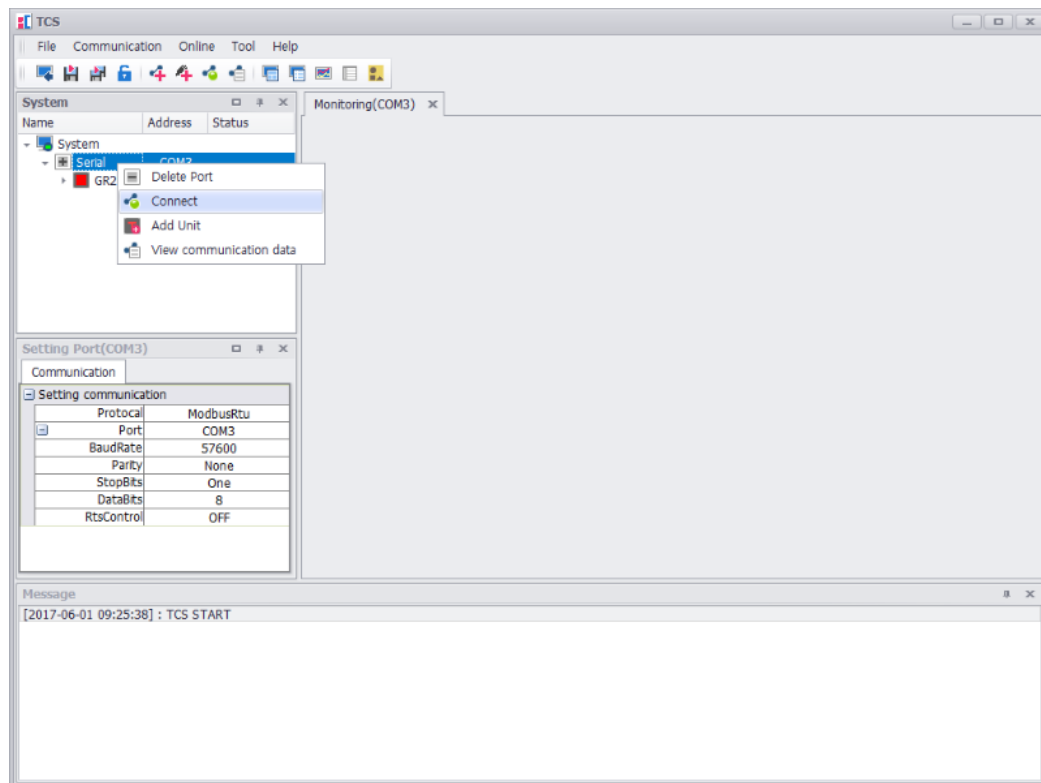
From the communication add window, after setting the communication port and equipment settings, connect the communication.

If the communication port and equipment are connected properly, the port and equipment are added as shown below.

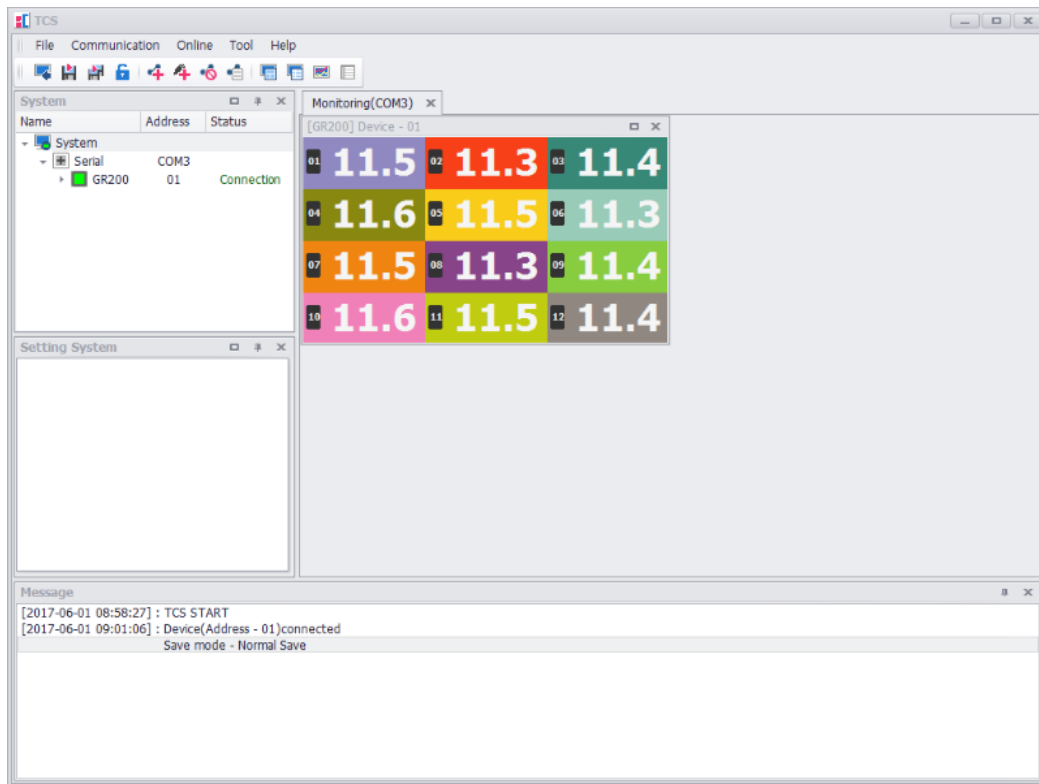


In order to connect the communication, from the system screen of the main screen, do the right-click with the mouse on the port that started the communication,

select "communication connect menu" or select the communication add icon () of the toolbar, and the communication will start.




During the first communication, the basic monitoring screen of the equipment is shown automatically.



6. Monitoring

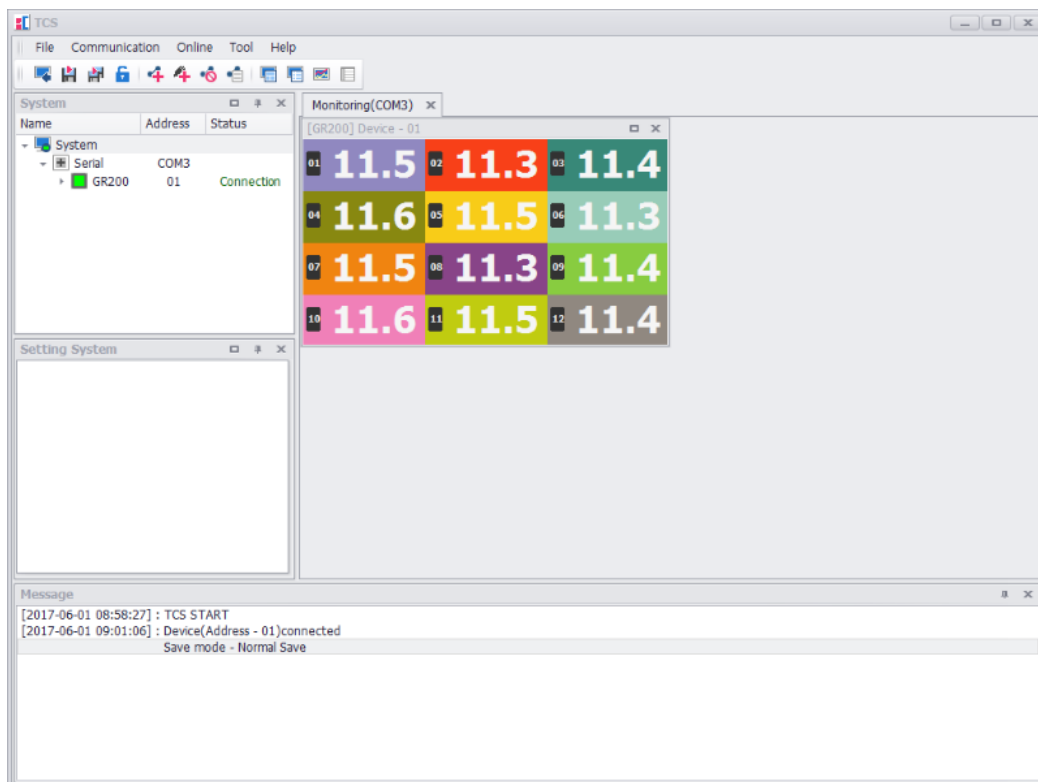
6.1 Monitoring

If the communication is connected, the monitoring screen is shown automatically.

From a communication connected state, select from the menu "Online→Monitoring" or select the monitoring icon () of the toolbar and the monitoring window appears.

For each monitoring screen of the equipment, if it has been implemented in a similar way as the real equipment, the screen layout is different to each equipment. (The figure shows monitoring screen of GR200 equipment.)

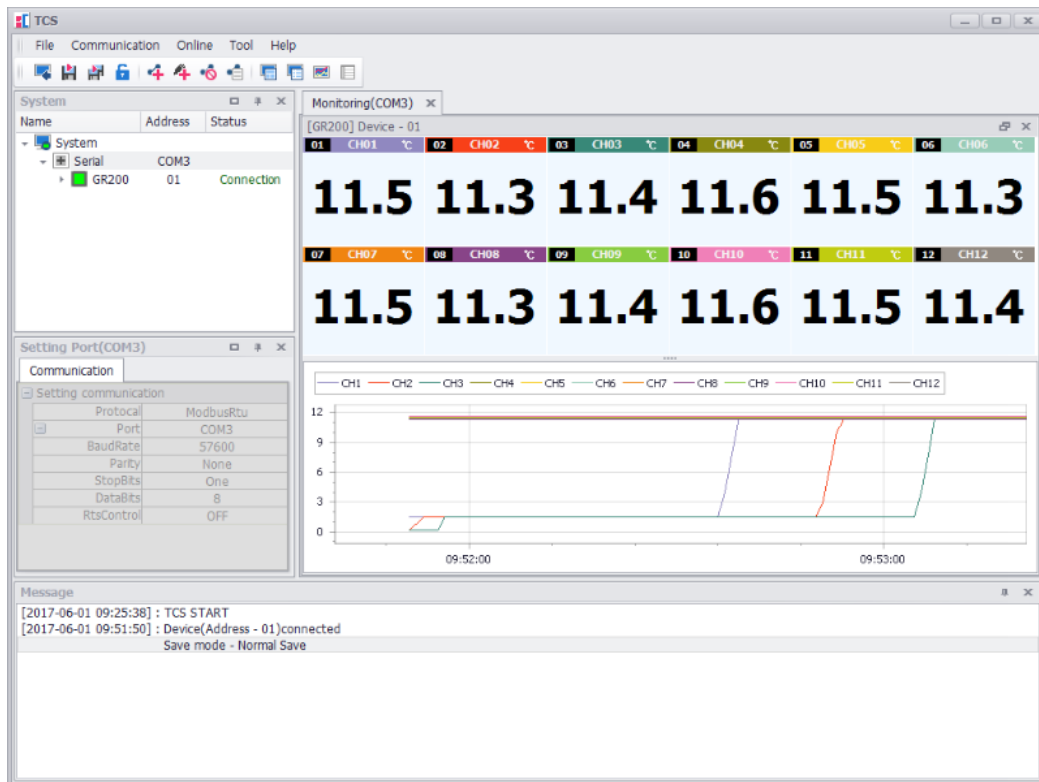
- ※ In the screen the maximum quantity of the monitoring screens that can be viewed is 4, if more the background hides.




After using the maximizing function of the basic monitoring, in case of screen magnification, the equipment detailed monitoring screen appears.

After division, unlike the screen displayed, it consists of equipment screen + trend screen.

When pressing the minimization button, it returns to the previous basic monitoring screen.



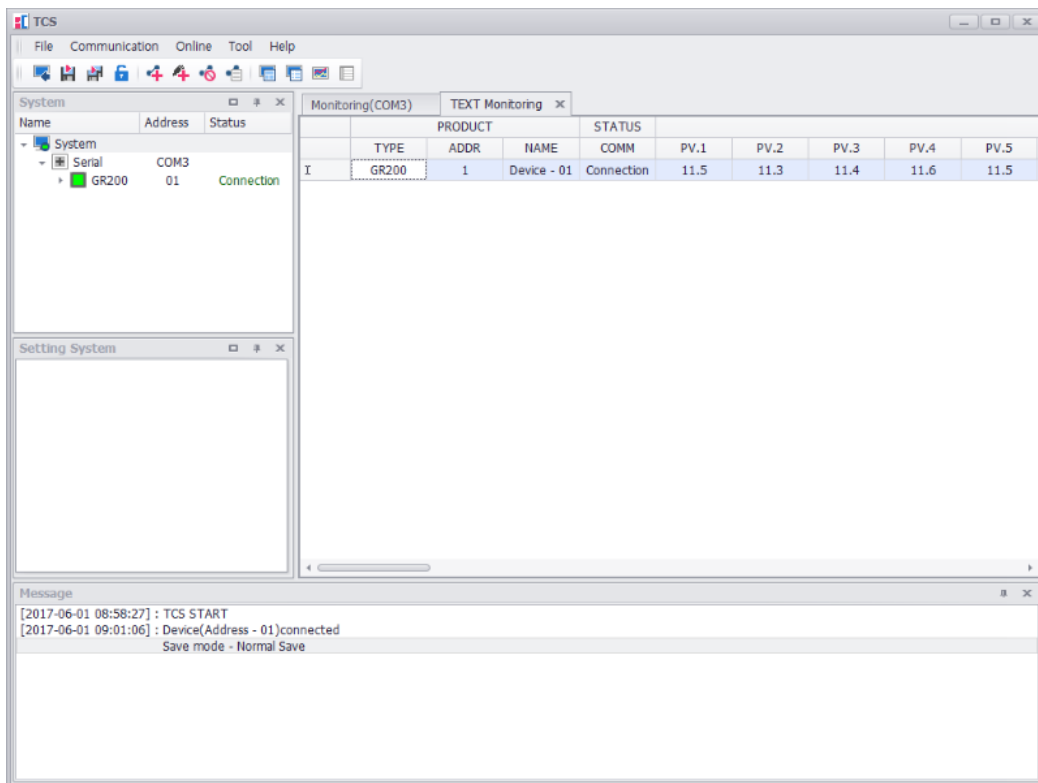
6.2 Text Monitoring

From a connected state, in the menu select "Online → TEXT Monitoring" or select the multi-monitoring icon () of the toolbar, and the multi monitoring screen appears.


Regarding the text monitoring screen, the equipment data are shown in the screen in the form of a list, and all the equipment currently connected are displayed.

The data displayed in the screen are displayed per equipment, and the displayed data form is different per each equipment.

(The figure shows monitoring screen of GR200 equipment.)



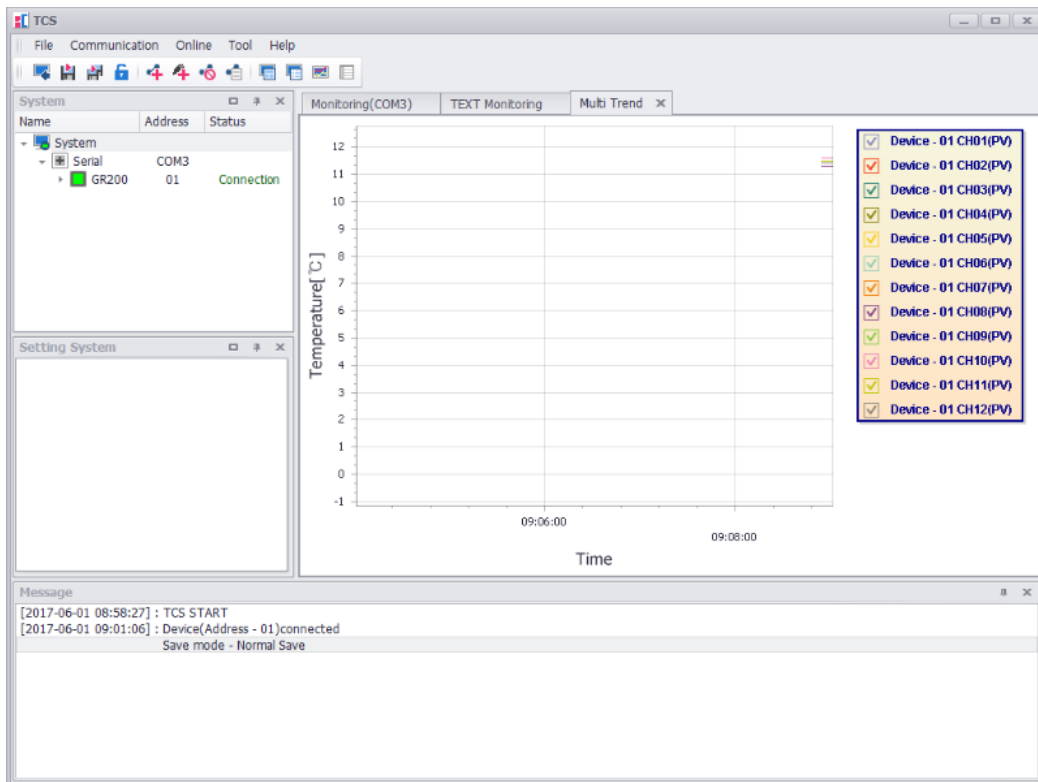
6.3 Multi Trend

From a connected state, in the menu select "Online→Multi Trend" or select the multi trend icon () of the toolbar, and the multi trend window appears.


Regarding the multi trend screen, the equipment data are shown in the screen in the form of a trend (graph), and all the equipment currently connected are displayed.

The data displayed in the screen are all displayed in one graph, and are all displayed regardless of the channel quantity of each equipment.

Regarding the scale of the displayed graph, the whole data top and bottom are displayed .



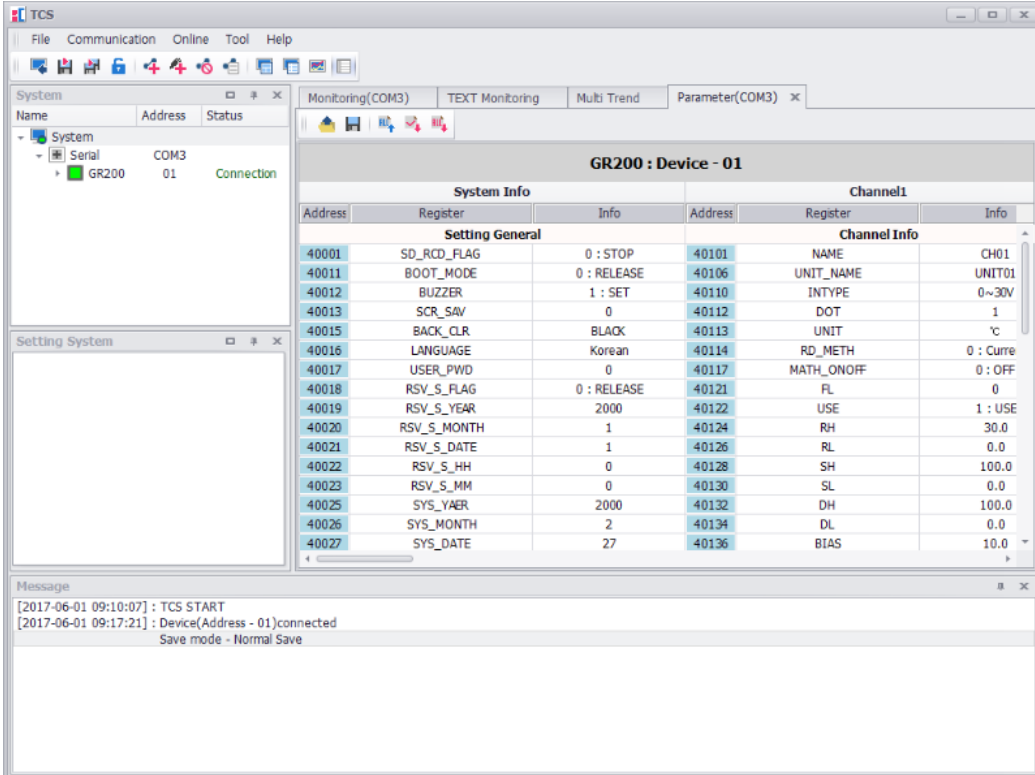
7. Parameter

From a connected state, in the menu select "Online→ Parameter" or select the parameter icon () of the toolbar, and the equipment parameter window appears.

When the parameter window appears, it uploads the parameter settings from the equipment to the TCS automatically.

Later, after modifying the uploaded parameter data of the equipment, it is possible to download them again fully / partially to the equipment.

Besides, it possible to reload the current parameter data, after saving them as file.




Setting General			Channel Info		
Address	Register	Info	Address	Register	Info
40001	SD_RCD_FLAG	0 : STOP	40101	NAME	CH01
40011	BOOT_MODE	0 : RELEASE	40106	UNIT_NAME	UNIT01
40012	BUZZER	1 : SET	40110	INTYPE	0~30V
40013	SCR_SAV	0	40112	DOT	1
40015	BACK_CLR	BLACK	40113	UNIT	°C
40016	LANGUAGE	Korean	40114	RD_METH	0 : Curre
40017	USER_PWD	0	40117	MATH_ONOFF	0 : OFF
40018	RSV_S_FLAG	0 : RELEASE	40121	FL	0
40019	RSV_S_YEAR	2000	40122	USE	1 : USE
40020	RSV_S_MONTH	1	40124	RH	30.0
40021	RSV_S_DATE	1	40126	RL	0.0
40022	RSV_S_HH	0	40128	SH	100.0
40023	RSV_S_MM	0	40130	SL	0.0
40025	SYS_YAER	2000	40132	DH	100.0
40026	SYS_MONTH	2	40134	DL	0.0
40027	SYS_DATE	27	40136	BIAS	10.0

 : Open Parameter File

 : Save Parameter File

 : Parameter download(TCS ← Unit)

 : Part Parameter upload (TCS → Unit)

If you upload the parameter part, it is possible to upload only the modified data to the equipment.


(The exclamation mark is displayed on the modified
data

40012	!	BUZZER	0 : RELEASE
-------	---	--------	-------------

)

 : All Parameter upload (TCS → Unit)

8. Pattern

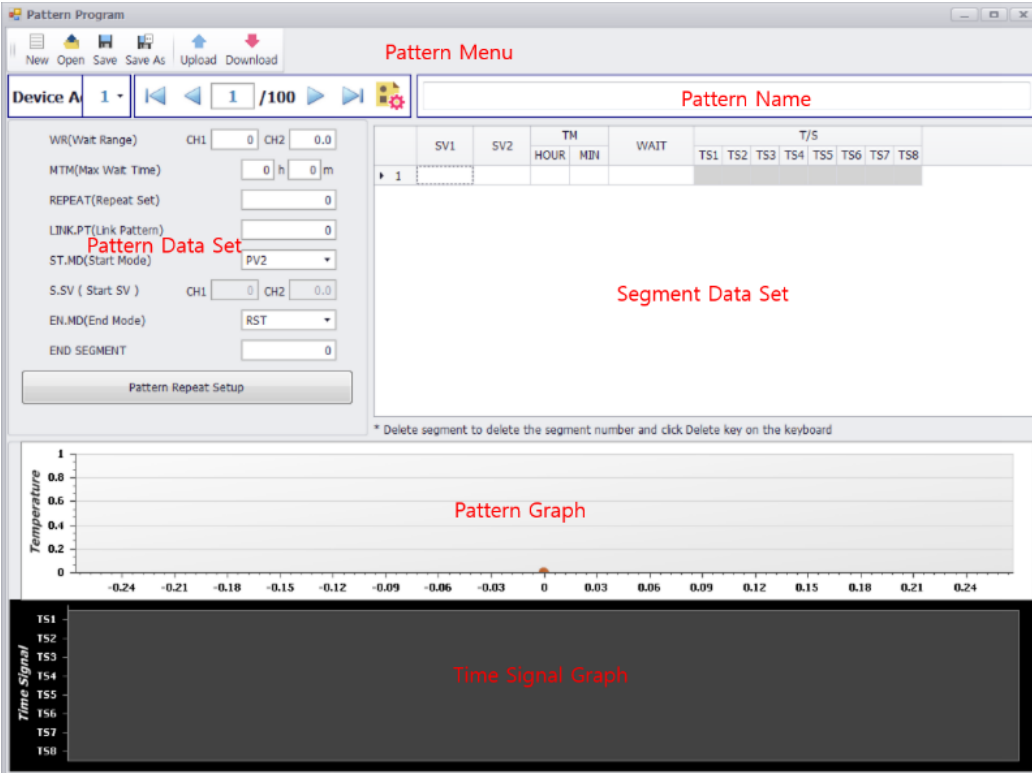
From a connected state, in the menu select "Online→ Pattern program" or select the pattern program icon () of the toolbar, and the equipment pattern window may appear.

Right after the pattern window appears, the equipment pattern data are not loaded.

After selecting the upload button of the pattern program window, it is possible to load the equipment pattern data.

After purchasing or resetting the equipment, when you set the pattern for the first time, you can work even without pattern uploads of the equipment.

The pattern program window structure is shown below.



Pattern Program

Pattern Menu

Device A 1 | 1 /100

Pattern Name

1	SV1	SV2	TM		WAIT	T/S											
			HOUR	MIN		TS1	TS2	TS3	TS4	TS5	TS6	TS7	TS8				

Pattern Data Set

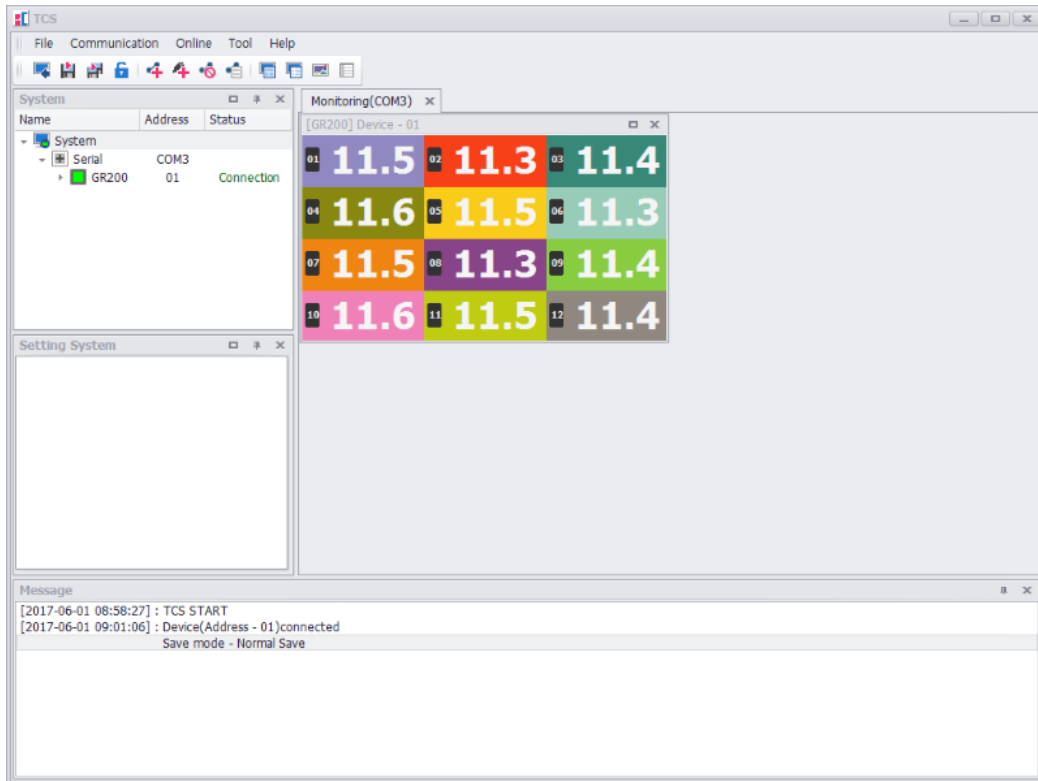
Segment Data Set

Pattern Graph

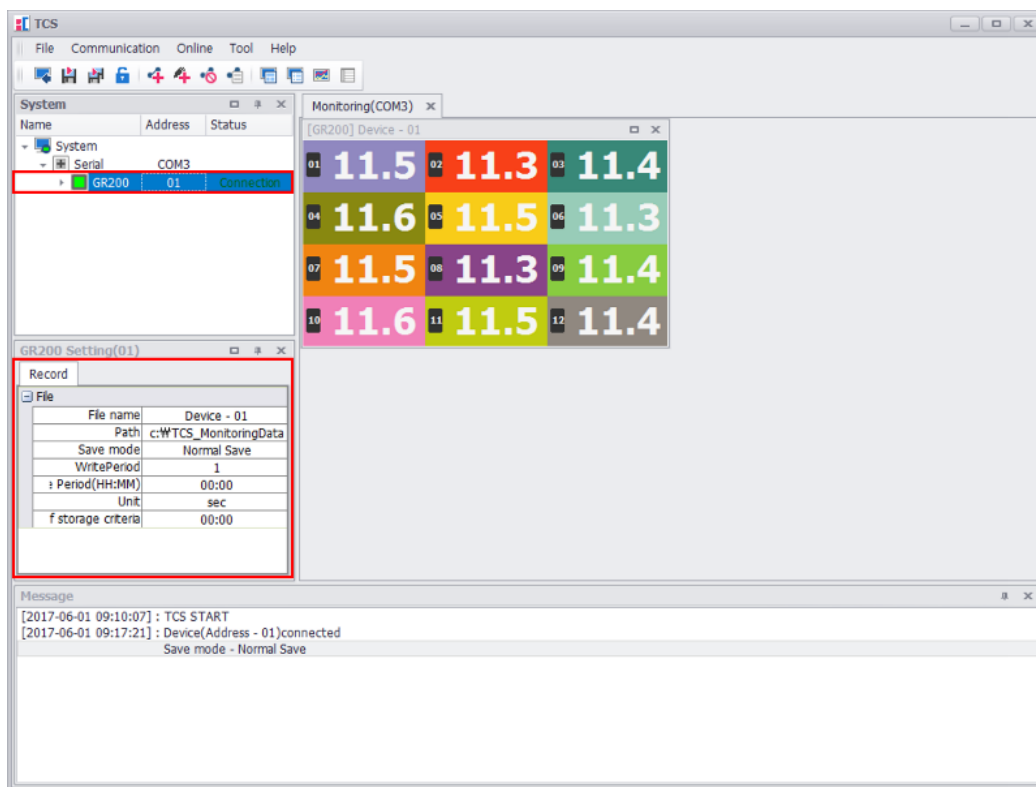
Time Signal Graph

9. Save Monitoring Data

In order to save the monitoring data, the basic communication must be connected.



From a correctly connected communication state, if you select Unit from the system menu, the unit record window appears.



① File name: Save file name

② Path : Save file path

③ Mode : There are general, set time and operation

- Normal : User selects save icon () to start saving, and select stop icon () to stop saving.

- Set time : User selects save icon () and starts saving, and automatically stops after saving for set time (④ below).

- Operation : In case of control operation (RUN), start saving automatically, and select stop icon () to stop saving.

④ Setting time (HH: MM) : Time to save after starting to save
(Use when saving mode is set time mode)

⑤ Cycle : Data save cycle (See ⑥ Cycle unit)

⑥ Unit(Cycle) : min or sec

⑦ File creation time: The time when a new file is created (a new file is created at the time set one day after the start of saving)

※ Regarding the monitoring data, in order to prevent the data enormity, a new file is created daily basis .

※ Communication cycle and storage cycle do not match. The data at the time of storage is the last value acquired by communication. Therefore, it may be different from the current value of the equipment.

※ The communication cycle differs depending on the number of connected devices, communication protocol and communication speed.

※ example

Data Sheet

Communication Data		Saved Data	
Time	Value	Saved Time	Saved Value
15:00:00	20	15:00:00	20
15:00:01	21	15:00:01	21
15:00:02	22	15:00:02	22
15:00:03	23	15:00:03	23
		15:00:04	23
15:00:05	25	15:00:05	25
		15:00:06	25
15:00:07	27	15:00:07	27

- 15:00:00 Start saving data, 15:00:07 End of saving data (storage cycle 1 second)

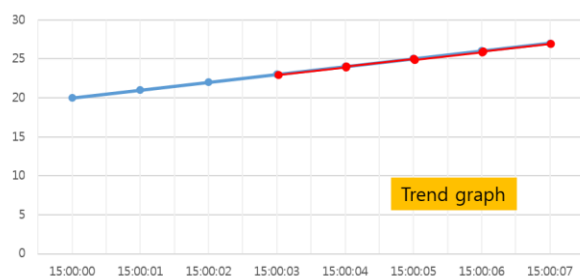
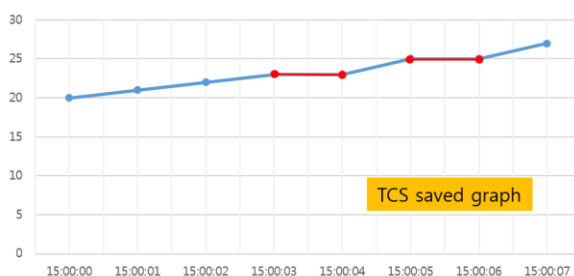
- Communication data acquisition (15:00:04, 15:00:06 No communication data)

- Saved every 1 second according to the storage cycle (15:00:00 ~ 15:00:07, last communication value)

- 15:00:04 (save last communication value 23)

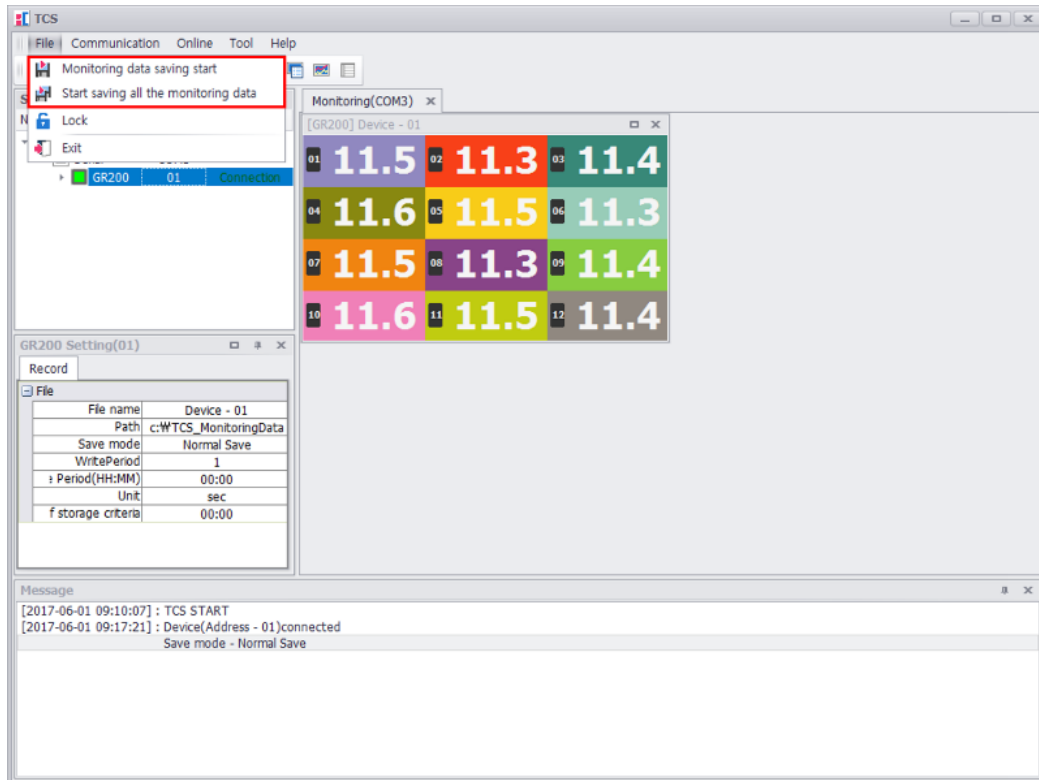
- 15:00:06 (Save last communication value 25)

※ If communication is done every second, it is expected as 'trend graph' (right) but actual saved as 'TCS saved graph' (left)





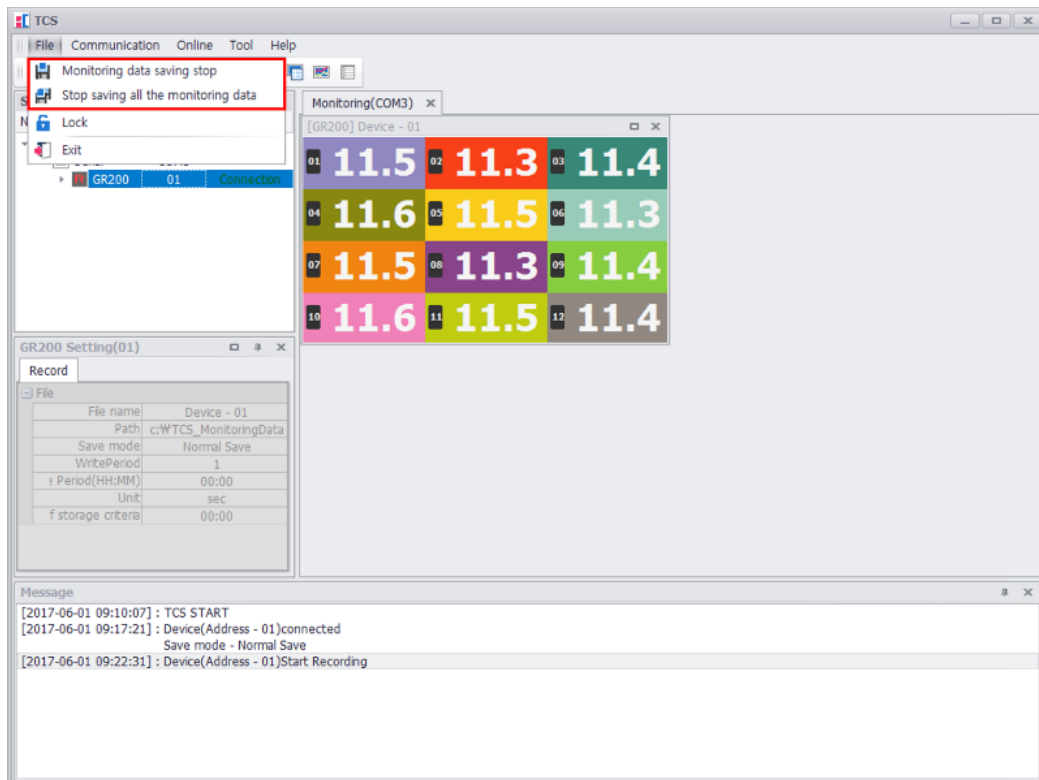
If you select "File -> Monitoring data save start, Monitoring data all save start"" in the menu,

or select the monitoring save icon () of the toolbar, the save starts



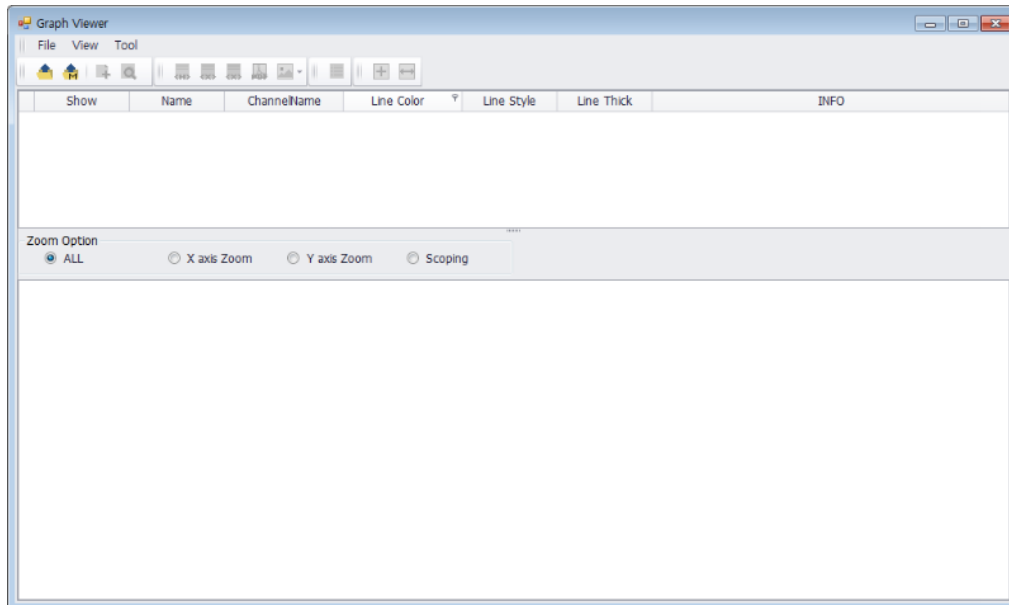
If you want to stop the monitoring data saving, in the same way, you can select "File -> Monitoring data save stop,


Monitoring data all save stop"" in the menu, or select the monitoring stop icon ( ) of the toolbar

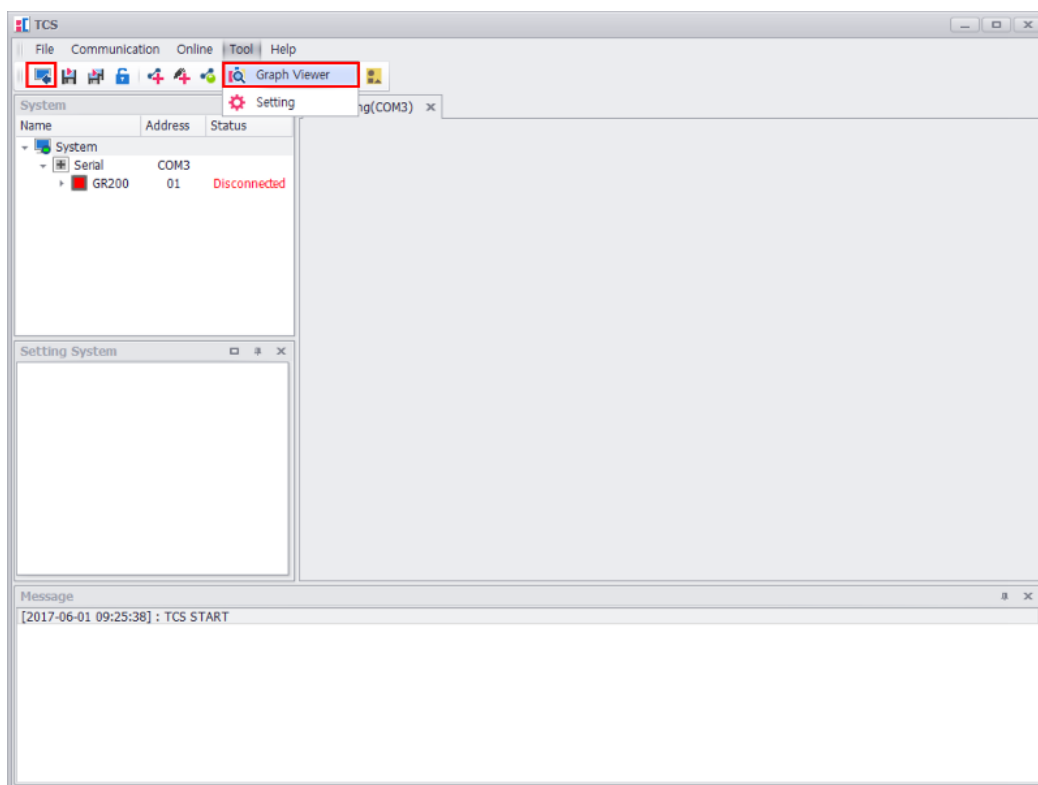


10. Graph Viewer

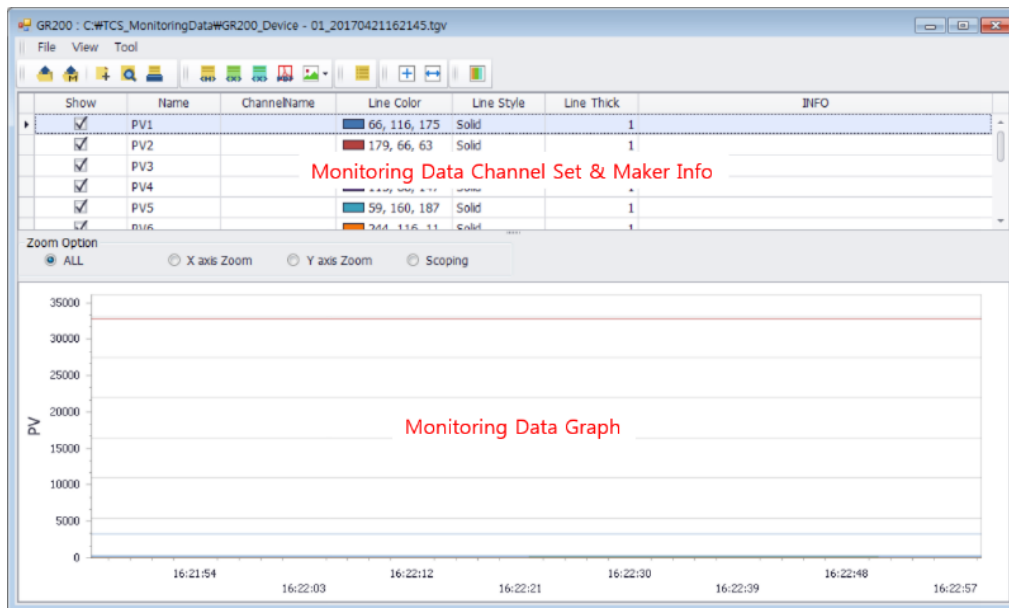
You can check the saved monitoring data in the TCS from the graph viewer.





In order to execute the graph viewer, you can do it during the installation through the installed graph viewer shortcut, or by selecting "Tool-> Graph Viewer" in the menu, or by selecting the data import icon () of the toolbar.




If the monitoring data are read in the graph viewer, the screen appears as below.




 : Load monitoring data

 : Load Multi monitoring data

 : Insert monitoring data (only monitoring data of the same type)

 : Preview

 : Print

 : Export HTML

 : Export XLS


 : Export XLSX

 : Export PDF

 : Export Image

 : View monitoring data List

 : Point View (Maker)

 : Range View (Range two Maker)

 : Graph Outline