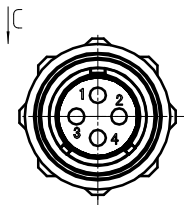
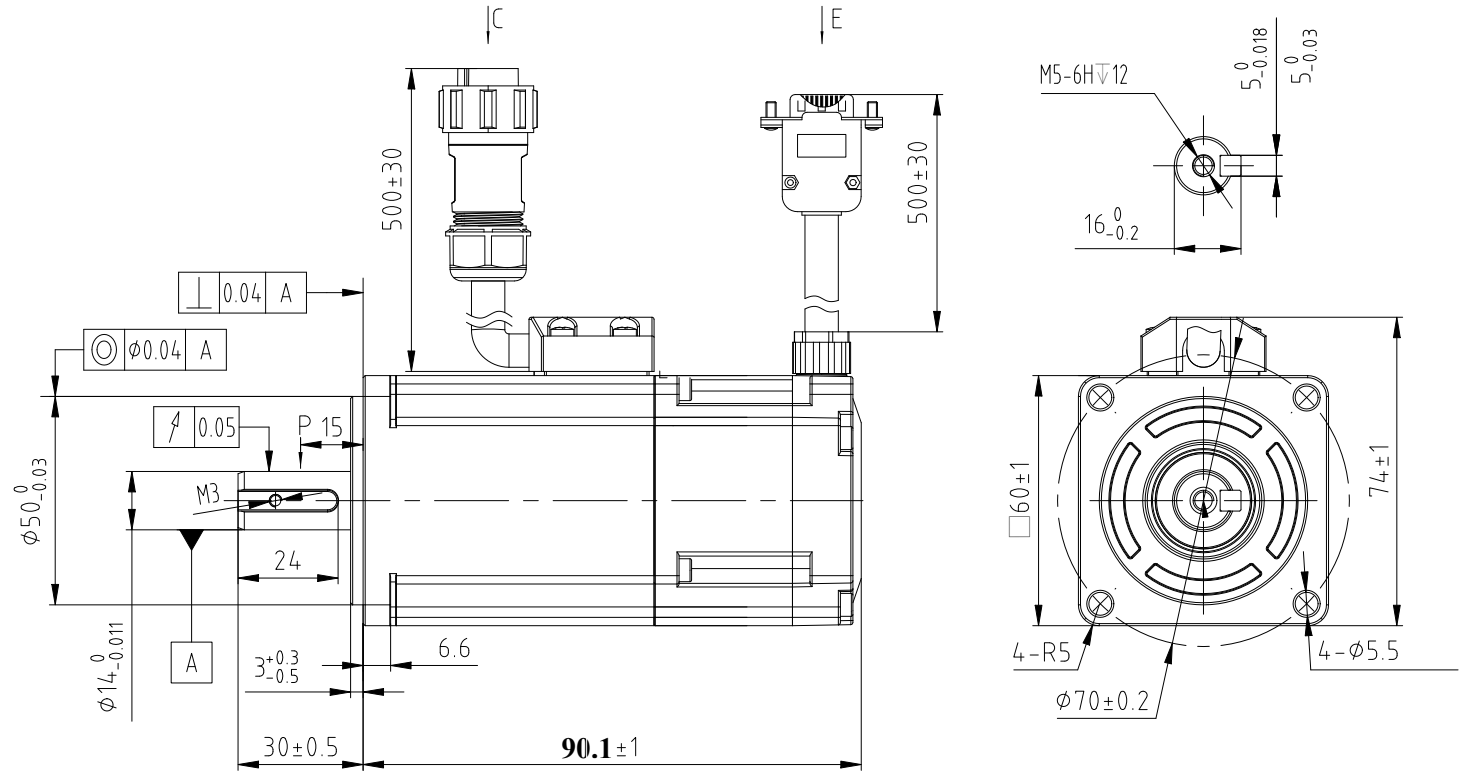
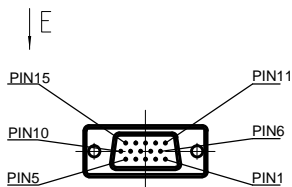
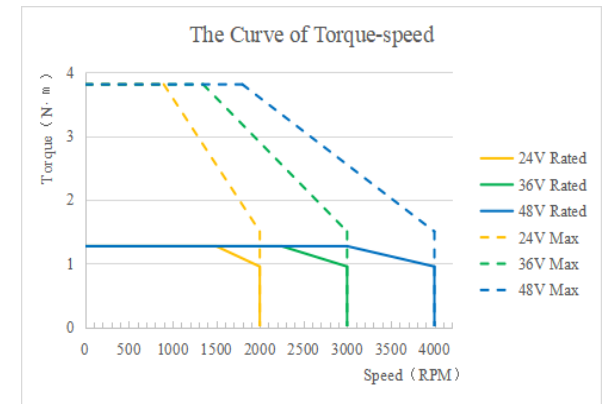


Rated voltage (VDC)	48
Rated power (W)	400
Rated torque (N.m)	1.27
Max torque (N.m)	3.81
Rated speed (rpm)	3000
Max speed (rpm)	4000
Rated current (A)	10
Max current (A)	31
Torque constant (N.m/A)	0.137
Back EMF constant (mV/rpm)	8.3
Inertia(kg*m ² *10 ⁻⁴)	0.58
Resistance(Ω)	0.28
Inductance(mH)	0.52
Motor poles	10
Encoder	2500 ppr
Max radial load (N)	245
Max axial load (N)	74
Protection level	IP65
Mass (kg)	1.3



Type	Power connector			
Pin	1	2	3	4
Defi	U	V	W	PE
Color	Red	Blue	Black	Yellow/green



Type	DB15 Male														
Pin	1	2	3	4	5	6	7	8	9	10	11	12	13	14	15
Defi	A+	B+	0V	W+	U+	FG	Z+	Z-	V+	V-	A-	B-	+5V	W-	U-

China Leadshine Technology Co. .Ltd

ELVM6040V48FH-B25-HD

400w servo motor with 2500ppr encoder
60mm frame size / 24-48V no brake