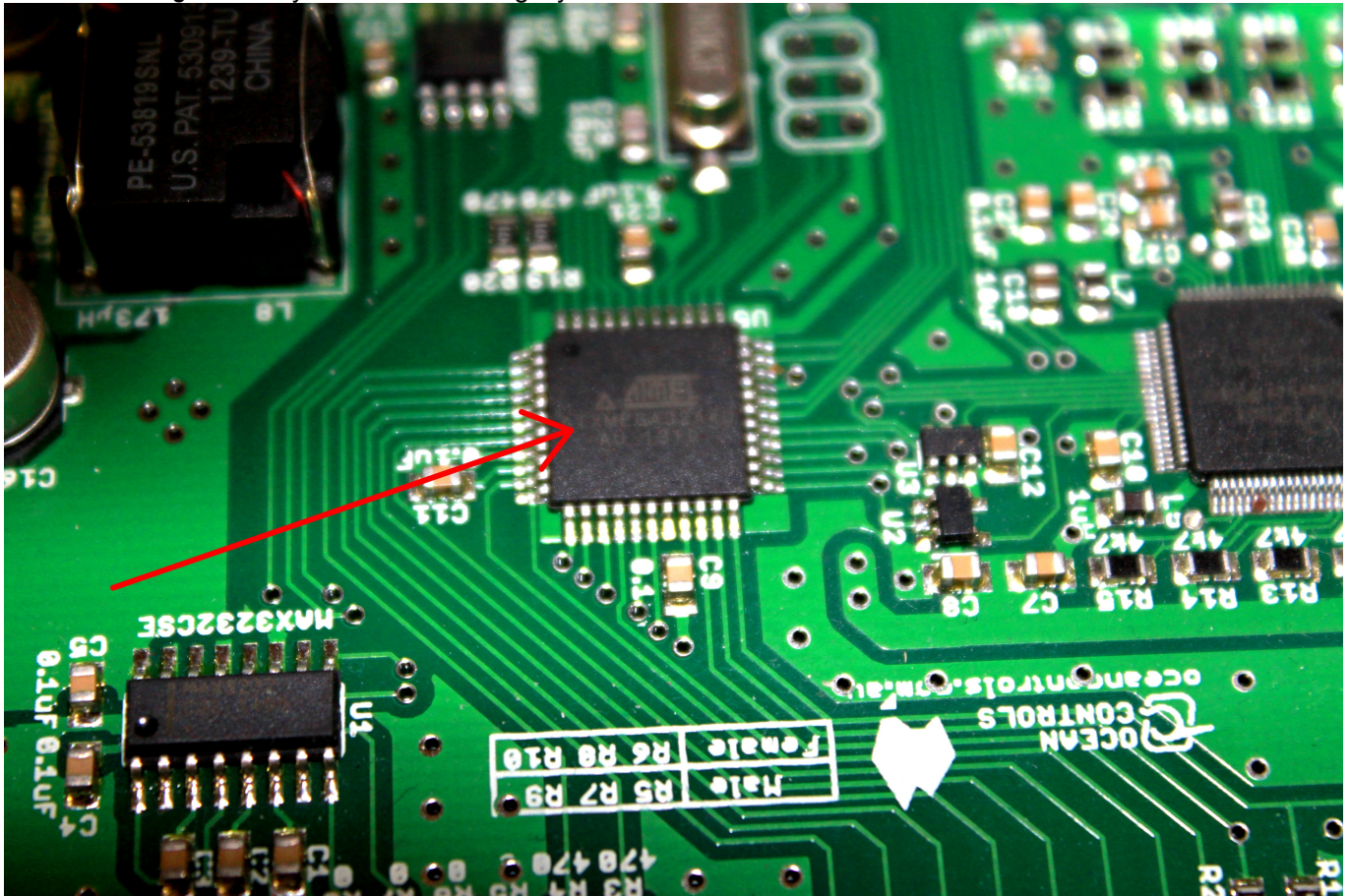


How to tell if you need the legacy firmware:

- Remove lid of KTA-282
- Note down the part number of the chip in the centre
- *Atxmega128A4U* is normal firmware
- *Atxmega32A4U* you will need the legacy firmware file



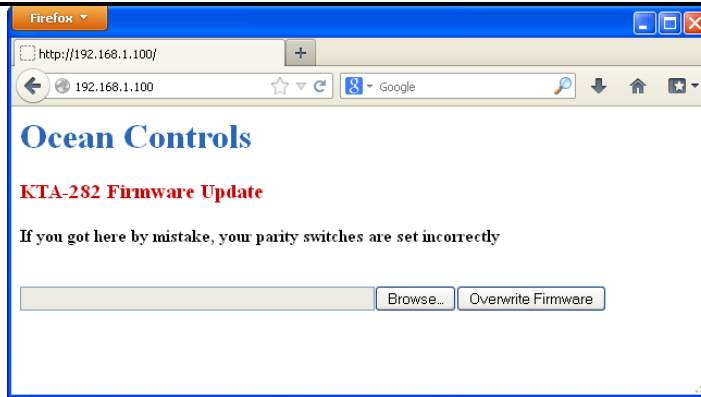
Bootloader Instructions

1. Looking at the Modbus RTU DIP switches (next to the power terminals), turn on switches 7 and 8 (these are normally used to set parity).
2. Make a direct connection between the PC and the KTA-282 using an Ethernet cable.
3. Set your PC's network card to:

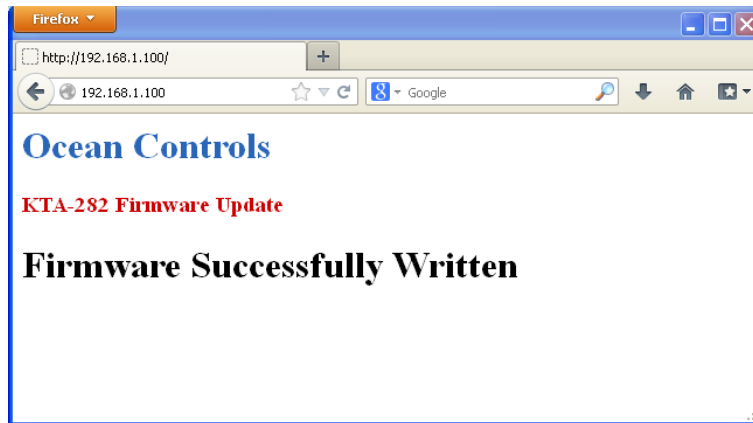
*IP Address: 192.168.1.1
Subnet Mask: 255.255.255.0
Default Gateway: 192.168.1.1*

See appendix for step by step instructions for windows

4. Apply 8 to 28V DC to the power terminals of the KTA-282. You should see the transmit and receive LED's next to the RS485 and Weather Station ports flash on and off. This confirms the KTA-282 is in bootloader mode.
5. Point your browser to 192.168.1.100. You should see this page:



6. Press browse and use the dialogue box to find the firmware update file provided to you by Ocean Controls. This will have extension **.enc**
7. Press Overwrite Firmware to commit the file to the KTA-282. You should now see your browser loading. Be patient in this process, the entire upload typically takes around 5 minutes. The RX LED on the Ethernet port should show significant activity, and the Ethernet TX LED should blink roughly every 10 seconds. This confirms the file upload is in progress.
8. Upon completion, your browser will show:

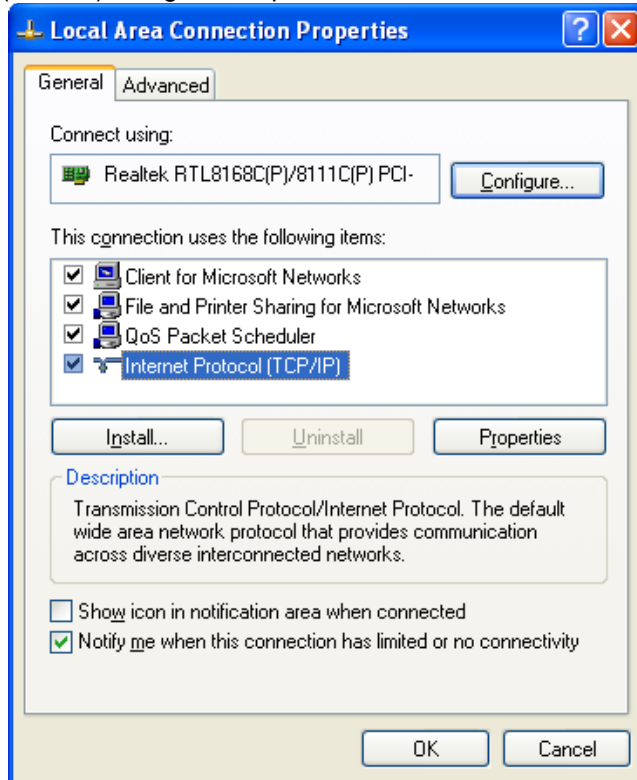


9. Power off the KTA-282, turn off switches 7 and 8, and reapply power. The KTA-282 should now be operating with updated firmware.

Appendix

Manually setting your PC's network configuration (for windows)

1. Open the control panel and go to Network Connections.
2. Right click on your LAN adapter and go to Properties.
3. Click on Internet Protocol (TCP/IP) and go to Properties.



4. Click on Use the following IP Address and type in the recommended values:

