

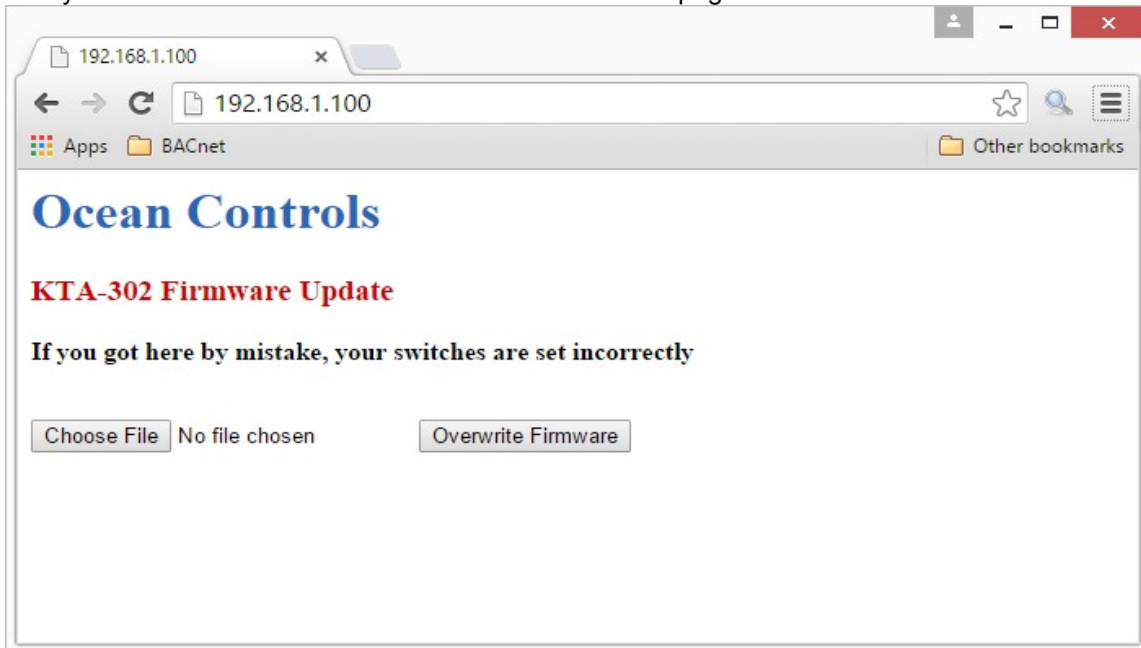
Bootloader Instructions

1. Looking at the switches next to the RS-232 connector, turn on switches 7 and 8.
2. Make a direct connection between the PC and the KTA-302 using an Ethernet cable.
3. Set your PC's network card to:

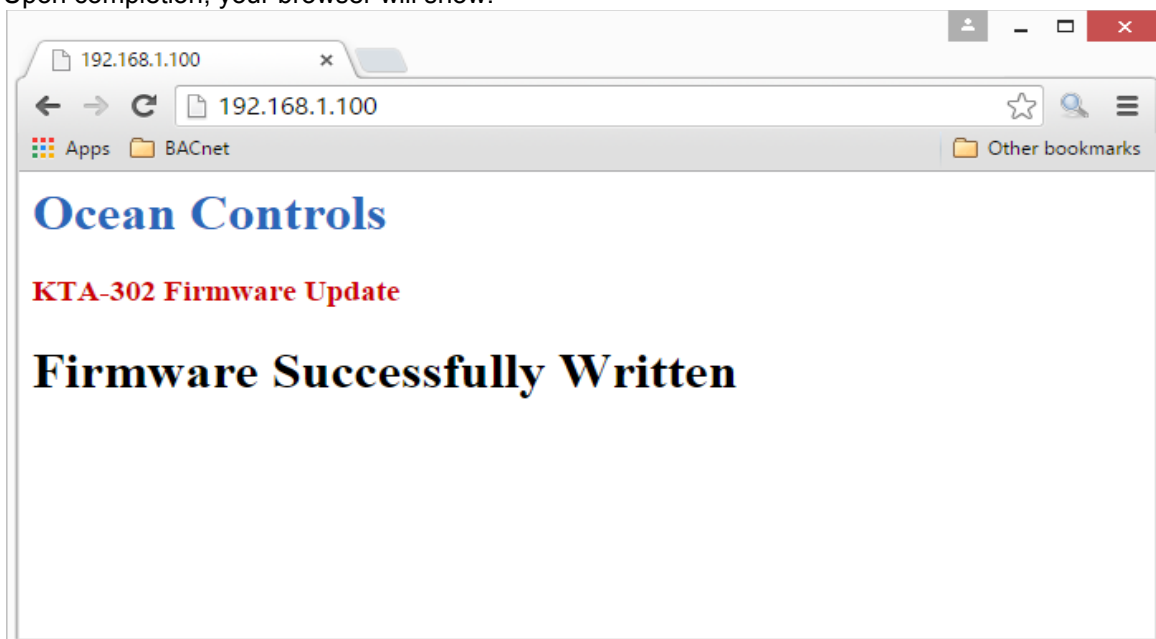
IP Address: 192.168.1.1
Subnet Mask: 255.255.255.0
Default Gateway: 192.168.1.1

See appendix for step by step instructions for windows

4. Apply 8 to 28V DC to the power terminals of the KTA-302. You should see the transmit and receive LED's next to the RS485 and Weather Station ports flash on and off. This confirms the KTA-302 is in bootloader mode.
5. Point your browser to 192.168.1.100. You should see this page:



6. Press browse and use the dialogue box to find the firmware update file provided to you by Ocean Controls. This will have extension **.enc**
7. Press Overwrite Firmware to commit the file to the KTA-302. You should now see your browser loading. Be patient in this process, the entire upload typically takes around 5 minutes. The RX LED on the Ethernet port should show significant activity, and the Ethernet TX LED should blink roughly every 10 seconds. This confirms the file upload is in progress.
8. Upon completion, your browser will show:

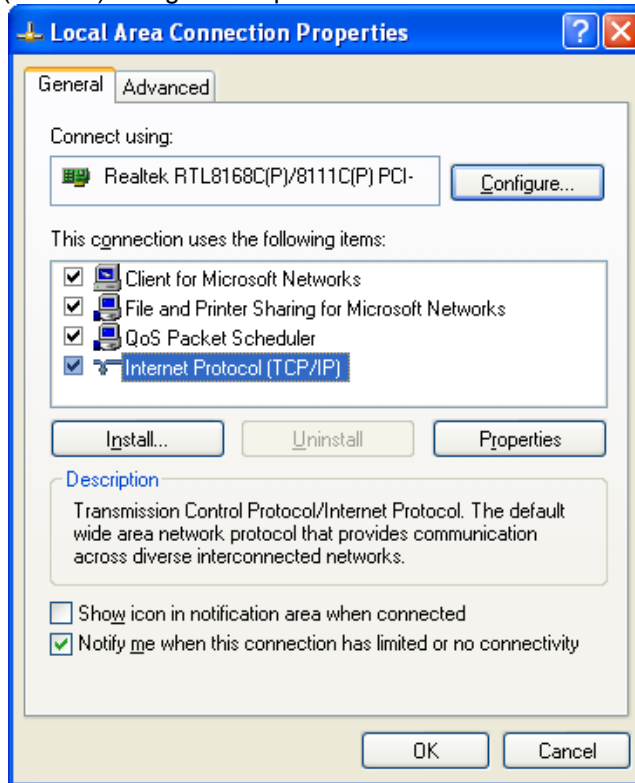


9. Power off the KTA-302, turn off switches 7 and 8, and reapply power. The KTA-302 should now be operating with updated firmware.

Appendix

Manually setting your PC's network configuration (for windows)

1. Open the control panel and go to Network Connections.
2. Right click on your LAN adapter and go to Properties.
3. Click on Internet Protocol (TCP/IP) and go to Properties.



4. Click on Use the following IP Address and type in the recommended values:

